



CONNECTIONS

DEARBORN COMMUNITY FOUNDATION, INC.



2010 ANNUAL REPORT
TO THE COMMUNITY

DCF BOARD OF DIRECTORS

2010 BOARD MEMBERS REPRESENT ALL CORNERS OF DEARBORN COUNTY

The Dearborn Community Foundation, Inc.'s (DCF) Board of Directors is made up of volunteers from all corners of Dearborn County, supporting the Foundation's primary purpose of building permanent endowment funds to serve donors who have charitable interests.

There were 15 members of the board in 2010. Directors are elected for three-year terms beginning with the annual meeting held in January of each year with approximately a third of the terms ending each year. A

director may serve a maximum of two full consecutive terms of service. The terms are staggered to provide continuity of experience.

Board members are elected by the board after it receives recommendations from the Board Development Committee which is charged with seeking talented leaders who are representative of the community.

The 2010 DCF Board of Directors and officers are pictured below.

EXECUTIVE COMMITTEE



John Maxwell
Chairperson
Logan Township



Mark Graver
President
Dillsboro



Dave Deddens
Vice President
St. Leon



Dr. Matthew B. Probst
Treasurer
Aurora



Luree Ketcham*
Secretary
Bright

BOARD OF DIRECTORS



Jada Ankenbauer*
Aurora



Charles Blankenship*
Greendale



Mary Fields
Dillsboro



Deanna Hacker
Hidden Valley Lake



Barry Nanz
Lawrenceburg



Gerald Nixon*
Bright



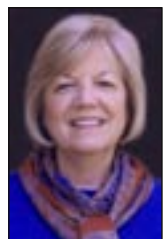
John Rumsey
Aurora



Jim Stock
New Alsace



Perry Taylor
Dillsboro



Judy Ullrich
Aurora

THE FOLLOWING JOINED THE BOARD OF DIRECTORS IN 2011



Tami Bovard
Aurora



Mary Ewbank
Hidden Valley Lake



Becky Lyons
Lawrenceburg



Dave Wismann
Aurora

* Term expired 2011

DCF IS COUNTY'S LEADER IN BUILDING PHILANTHROPIC RESOURCES, ENCOURAGING COMMUNITY DEVELOPMENT

Dear Friends:

The Dearborn Community Foundation continues to be our community's leader in building the philanthropic resources and encouraging community development that makes Dearborn County a great place to live, learn, work and play. The Foundation's board of directors and staff are pleased to provide an Annual Report to the Community to share the excitement of celebrating the significant impact that the Foundation has made on the lives of folks who live in our community over the past 13 years. Of course the Foundation could not have the impact that it does without the generous support of its donors and volunteers.

This Annual Report shares the impact on our community that the Foundation has had through its endowments held and the grants and scholarships awarded over the past year. Not only with words and financial figures but with photos are we able to tell the story of the Foundation during 2010.

Through the generosity of our donors, the Foundation was able to award nearly \$3 million in grants and scholarships in 2010 – making a difference in the lives of many people in our community by providing help to many non-profit organizations and aid to students in their post secondary educational efforts

In May 2010, the Foundation offered the "Double Your Donation" endowment matching program for the third straight year. The matching program was again highly successful with all \$150,000 matched. The program increased the Foundation's endowment for the community by \$300,000! Four new endowment funds were started during the matching program supporting educational needs of students in our county and other organizations that make a positive impact on the lives of community members. The success of the program emphasizes that many generous supporters share the Foundation's belief in the power of philanthropy. Additionally the success of the matching program helps the Foundation as it continues to grow towards operational self-sufficiency by growing endowed assets. More good news is the endowment matching program is offered once again in 2011 with more than two-thirds of the \$170,000 available for matching already matched!

The Foundation's community leadership continued to grow in 2010 through the regional EcO15 initiative aimed at engaging more community members in education and training in the areas of Advanced Manufacturing, Healthcare and Hospitality/Tourism toward their career goals to improve overall economic development and quality of life in Dearborn County. The EcO15 initiative was made possible through a three-year regional grant from Lilly Endowment, Inc. While the initiative's funding from Lilly Endowment is nearing the end of its three-year cycle, the Foundation continues to stay involved in a 10-county regional network created during the EcO15 initiative. We are proud to say the initiative has been highly successful, as the Foundation has awarded nearly \$600,000 in grants to help public and parochial schools in the community to establish more project-based learning curriculum to encourage career pathway development.

The Foundation once again is taking a leadership role, as it embarks on the last phase of the EcO15 initiative. DCF is working with community partners through the EcO15 Network for the Advancement of Broadband Learning Environments (ENABLE). The goal of ENABLE is to fully take advantage of true high-speed broadband technology to enhance learning environments and the development of career pathways that have been created through the EcO15 initiative. See the back cover for more information on the EcO15 ENABLE initiative.

Our hope is that you will read this 2010 Annual Report to the Community and share it with family, friends and neighbors. We want you to share with others the exciting news of the Foundation's significant impact on our community and how we all can work together to increase Dearborn County's philanthropic resources.



Mark Graver
President

A handwritten signature in dark ink, appearing to read "Mark Graver".



Fred McCarter
Executive Director

A handwritten signature in dark ink, appearing to read "Fred McCarter".



DCF IS YOUR PARTNER IN PHILANTHROPY

The Dearborn Community Foundation, Inc. (DCF) offers its services to donors and professional advisors to help them fulfill their philanthropic wishes and maximize their benefits. DCF is committed to making your charitable giving a pleasurable experience. The Foundation can discuss various gift vehicles and help find the best gift methods to meet donors' charitable, financial and estate planning goals.

The Foundation with assets of more than \$12 million, administers 95 endowments and non-permanent funds. Each endowment fund is established by a separate agreement and is accounted for individually. The funds are designed to carry out the philanthropic dream of the founding contributors. The corpus of a fund is pooled with other funds for investment purposes. Distributions from the fund in the form of grants, scholarships, or payments to designated non-profit agencies are made from investment earnings.

Donors' wishes vary from the granting of scholarships in the name of a deceased loved one to designated and field of interest endowments that provide assistance to a particular non-profit organization or cause. By establishing an endowment, a donor can create a source of income for a fund in perpetuity.

In this photo, kids from the Lawrenceburg Community Center enjoy a water safety presentation by Dearborn County Water Rescue using "Bobby the Boat," thanks to a \$3,000 grant from the City of Aurora Grant Program funded through the Aurora Quality of Life Improvement Fund.

Community United Methodist Church Fund: provides support for this church.

Dearborn Adult Center Fund: provides support to the Dearborn Adult Center.

Dearborn Community Foundation Operating Endowment Fund: provides operating support to the Dearborn Community Foundation, Inc.

Dearborn County Convention, Visitors & Tourism Bureau Fund: provides support to the Dearborn County Convention, Visitors & Tourism Bureau.

Dearborn County Historical Society Fund: provides support to the Dearborn County Historical Society.

Dearborn County Hospital Foundation Fund: provides support to the Dearborn County Hospital Foundation, Inc.

Dearborn County Quality of Life Improvement Fund: established to improve the quality of life for the residents in Dearborn County.

Dearborn Highlands Arts Council Fund: provides support to the Dearborn Highlands Arts Council.

Dillsboro Quality of Life Improvement Fund: established to improve the quality of life for the residents in Dillsboro.

Dillsboro Fire Department Fund: provides support for the Dillsboro Volunteer Fire Department.

Dixon-Andrews Designated Endowment Fund: provides operational support to the Dearborn Community Foundation, Inc.

Dr. Leslie M. Baker Fund: provides support to Hillforest Historical Foundation, Inc.

Heffelmire Family Fund: provides operational support to the Dearborn Community Foundation, Inc.

Hillforest Historical Foundation Fund: provides support to the Hillforest Historical Foundation, Inc.

Historic Hoosier Hills RC&D, Inc.: provides support to the Historic Hoosier Hills RC&D, Inc.

Ivy Tech Lawrenceburg Campus Fund: provides support to the Ivy Tech Foundation.

Laura Busse Rahe Library Fund: provides support to the Aurora Public Library for the purchase of books in Laura Busse Rahe's name.

Lawrenceburg Public Library Services & Resources Fund: provides support to the Lawrenceburg Public Library Foundation.

LaVerne Denmure Fund: provides support for Hillforest Historical Foundation, Inc.

Loren & Christine Shuter Family Fund: provides support to St. John Evangelical Lutheran Church of Aurora, Indiana.

Main Street Aurora Fund: provides support to Main Street Aurora.

Main Street Aurora Inc. Trail Fund: provides support to Main Street Aurora, Inc. for Dearborn Trails.

Manchester Universalist Unitarian Church Fund 1: provides support to the Manchester Township Volunteer Fire & Rescue, Inc.

Manchester Universalist Unitarian Church Fund 2: provides support to the Manchester Area Civic Association, Inc.

DESIGNATED FUNDS

Alzheimers Support Groups of Southeast Indiana Fund provides support to the Alzheimers Support Groups of Southeast Indiana.

Aurora Public Library District Fund: provides support to the Aurora Public Library District.

Aurora Quality of Life Improvement Fund: provides funds to improve the quality of life for the residents of the City of Aurora.

Aurora Tri-Kappa Fund: provides support to the Kappa Chapter of Kappa Kappa Kappa scholarship program.

Bright Lions Club Fund: provides support for the charitable works of the Bright Lions Club.

Community Mental Health Center Foundation Fund: provides support to the Community Mental Health Center Foundation, Inc.

ENDOWMENT FUNDS / *your contribution*

New Horizons, Services & Support For The Mentally Handicapped Fund: provides support to New Horizons Rehabilitation, Inc.

North Dearborn Pantry Fund: provides operational support to the North Dearborn Pantry, Inc.

Pete Parrott Fund: provides support to the Hillforest Historical Foundation, Inc., for exterior maintenance of the museum.

PI Chapter of Kappa Kappa Kappa Inc. of Lawrenceburg Fund: provides support to the PI Chapter of Kappa Kappa Kappa Inc. of Lawrenceburg.

Rachel Meece Memorial Fund: provides support to Rachel's Garden at the Cincinnati Zoo & Botanical Garden and also provides support to East Central High School for the Rachel Meece Memorial Scholarship.

RSVP Fund: provides support to the Retired Senior Volunteer Program.

Ross Foundation Fund: provides support to the Ross Foundation, Inc.

Senior Services Development Fund: provides support to Lifetime Resources, Inc..

South Dearborn Education Foundation Fund: to provide support to the South Dearborn Community School Corporation.

St. John Evangelical Lutheran Church Fund: to provide operational support to the mission of St. Johns Evangelical Lutheran Church in Aurora, Indiana.

Telford & Louise Walker Fund: to provide operational support to the Dearborn Community Foundation.

United Way of Greater Cincinnati, Dearborn & Ohio Counties Fund: provides support to the Dearborn and Ohio County United Fund.

DONOR ADVISED FUNDS

Blair Family Fund: provides support for charitable purposes or organizations.

Community Health & Wellness Fund: provides funds to promote health and wellness in Dearborn County.

Jack Carpenter Memorial Fund: provides support for charitable purposes or organizations.

Katie Bruner Memorial Fund: provides support for charitable purposes especially in the area of scholarships and eating disorders education and awareness.

Lehner Family Fund: provides support for charitable purposes or organizations.

Powell Family Fund: established to provide support for charitable purposes and organizations for the betterment of youth and our community.

PFC Craig A. Keller Memorial Fund: provides support for charitable purposes or organizations.

Rupel Family Fund: provides support for charitable purposes or organizations.

The Dearborn County Register Warm the Children Endowment Fund: provides support for charitable purposes or organizations for the betterment of youth and our community. The fund benefits needy children in Dearborn County, Indiana by supporting the Warm the Children Program.



Donors establish endowments at DCF for a range of charitable causes, including scholarships, youth organizations, and operational support for organizations such as Southeastern Indiana Art Guild, Inc.

The Willis & Irene Chalk Memorial/Dixon Family Fund: provides support for charitable purposes or organizations.

FIELD OF INTEREST FUNDS

Chester & Ida Muntz Family Memorial Fund: provides support for families with children battling cancer.

Lawrenceburg Youth Fund: provides grants to support youth programs and organizations that operate youth programs.

Sprint Educational Excellence Fund: provides grants for any charitable purpose that promotes educational excellence within Dearborn County.

Women Empowering Women Fund: established to provide support for programs that help women in need within our community.

SCHOLARSHIP FUNDS

Barrott Family Scholarship Fund: provides support for Dollars For Scholars South Dearborn Chapter Scholarship America, Inc.

Benner-Walsman Memorial Scholarship Fund provides support for East Central High School to award the Berner-Walsman Memorial Scholarship.

Chris Midlam Memorial Scholarship Fund provides support for Dollars for Scholars South Dearborn Chapter Scholarship America, Inc.

Clifford and Gladys Ellerbrook Ender Nursing Scholarship Fund: provides scholarship support to Dearborn County students pursuing a LPN, RN or equivalent degree.

Dan Kuebler Memorial Endowment Fund: provides scholarships for graduates of Lawrenceburg High School and provides funds to support student programs, such as the annual Senior Breakfast.

Dearborn County 4-H Scholarship Fund: provides support to the Dearborn County 4-H Association for the award of scholarships.

Deborah Meyers Guss Memorial Scholarship Fund: provides support for Dollars For Scholars South Dearborn Chapter Scholarship America, Inc.

Denise Ann Beyer Memorial Scholarship Fund: provides scholarship support to a graduate from South Dearborn High School pursuing higher education in the math or science field.

Dr. Jim Swanson Scholarship Fund: established to award scholarships to Lawrenceburg High School students with a disability, as defined by the American Disability Act (ADA), planning to attend an accredited college.

Dr. Leslie M. Baker Memorial Scholarship Fund: provides scholarships for residents of Dearborn, Ohio and Switzerland counties studying medicine with preference given to students that attend the Indiana University School of Medicine in Indianapolis.

East Central Scholarship Fund: provides support to the Sunman-Dearborn Scholarship Foundation, Inc. for scholarships for East Central students.

The Frank R. Longcamp Scholarship Fund: provides a scholarship for one student from each of Dearborn County's three high schools based on criteria set forth by the donor.

Fraternal Order of Police Scholarship Fund: provides scholarships to high school students in Dearborn and Ohio counties planning to attend college.

Gary Lyon Memorial Scholarship Fund: to provide support to South Dearborn High School students who would like to attend a workshop or special event and financially cannot afford to do so.

Gerry Lehn Memorial Scholarship Fund: provides scholarship support to graduates of Lawrenceburg High School.



DCF also awards grants through non-permanent (non-endowed) funds such as a \$100,000 grant from the Lawrenceburg Community Grant Program to the Lawrenceburg Conservancy District Community Athletic Park for playground, park and ball field equipment.

NON-PERMANENT PROGRAMS

The Dearborn Community Foundation, Inc. (DCF) also administers non-endowed or non-permanent grant and scholarship programs for other entities. The Foundation provides professional service to these donors to help them reach their charitable goals in the Dearborn County Community.

The Foundation currently administers four non-permanent programs:

City of Aurora Grant Program: provides support to non-profit organizations in Dearborn County. The City of Aurora in 2010 generously contributed grant funds to DCF specifically for grant awards to tax exempt not-for-profit organizations that provide a benefit, direct or indirect, to Dearborn County communities. In 2010, fourteen grants totaling \$50,000 were awarded to charitable organizations that benefit our community.

Lawrenceburg Educational Grant Program: provides support for the post-secondary education of graduating seniors of Lawrenceburg High School who meet specific criteria set forth by the City of Lawrenceburg. Approximately 170 Lawrenceburg High School graduates were awarded a total of \$304,000 in scholarships in 2010.

Lawrenceburg Community Grant Program: provides support to non-profit organizations in Dearborn County. The City of Lawrenceburg in 2010 generously contributed grant funds to tax-exempt non profit organizations that provide a benefit, direct or indirect, to the City of Lawrenceburg and Dearborn County communities. In 2010, 72 grants totaling \$2 million were awarded to charitable organizations that benefit our community.

Lilly Endowment Community Scholarship Program: provides two, four-year scholarships to Dearborn County graduating seniors.

Greg Andres North Dearborn Conservation Club Memorial Scholarship Fund: provides scholarship support to a graduate of East Central High School or Franklin County High School pursuing a career as a conservation or law enforcement officer or a career in the medical field.

Ivy Tech Community College Scholarship Fund: provides support for Ivy Tech Foundation, Inc.

James Lohmiller Memorial Scholarship Fund: provides scholarship support to graduates of Lawrenceburg High School.

Kathi Green Memorial Scholarship Fund: provides support for Dollars For Scholars South Dearborn Chapter Scholarship America, Inc.

Kay Chalk Memorial Scholarship Fund: provides support for Dollars For Scholars South Dearborn Chapter Scholarship America, Inc.

Lawrenceburg Kiwanis Club Fund: provides scholarship support based on criteria established by the Lawrenceburg Kiwanis Club.

Michael Cleary Memorial Scholarship Fund: provides a scholarship for a graduate of East Central High School pursuing a two or four year degree at an accredited institution.

Michael R. Marine Memorial Scholarship Fund: provides support for Dollars For Scholars South Dearborn Chapter Scholarship America, Inc.

Nanz Family Scholarship: provides scholarships for Lawrenceburg High School and South Dearborn High School students.

Perpetual Rotary Scholarship Fund: provides scholarship support to a graduate of South Dearborn High School pursuing a 2 or 4 year degree at an accredited institution.

Roger Gulley Memorial Scholarship Fund: established to provide scholarship support to a graduate of South Dearborn High School pursuing a degree in higher education related to music.

Ross Eiler Memorial Scholarship Fund: provides scholarship support to Lawrenceburg High School students planning to attend a four-year accredited institution of higher learning.

Ronald Selmeyer Scholarship Fund: established by the City of Greendale in honor of the late Ronald Selmeyer to provide a scholarship for a senior at Lawrenceburg High School.

South Dearborn Challenge Scholarship Fund: provides support for Dollars For Scholars South Dearborn Chapter Scholarship America, Inc.

South Dearborn Scholarship Foundation Fund: provides support to the South Dearborn Dollars for Scholars for scholarships for South Dearborn High School students.

UNRESTRICTED FUNDS

Community Grantmaking Fund: annual distributions are used for general granting purposes to charitable organizations in Dearborn County.

Community Unrestricted Fund: annual distributions are used for general granting purposes to charitable organizations in Dearborn County in the fields of community service, social service, education, health, environment and the arts.

Rupel Family Unrestricted Fund: provides support to charitable organizations in Dearborn County as directed by the DCF board of directors.

In The Interest of Children Unrestricted Fund: provides support to charitable organizations as directed by the Dearborn Community Foundation's board of directors.

ARTS, CULTURE AND HUMANITIES

Dearborn Highlands Arts Council

Art supplies for Artist in Education school program. City of Lawrenceburg Youth Grant Program.
\$1,200

Dearborn Highlands Arts Council

Concert at Aurora Park pavilion. City of Aurora Grant Program.
\$1,000

Dearborn Highlands Arts Council

2010 Arts Alive Arts Fair. County Progress Grant Program.
\$3,245

Dearborn Highlands Arts Council

2010-2011 Performing Arts Series. City of Lawrenceburg Community Grant Program.
\$33,251

Southeastern Indiana Art Guild, Inc.

Facility rent, utilities and insurance. City of Lawrenceburg Community Grant Program.
\$10,000

Southeastern Indiana Art Guild, Inc.

Facility rent, utilities and insurance. City of Aurora Grant Program.
\$3,000

Hillforest Historical Foundation

Exterior museum and grounds maintenance. City of Aurora Grant Program.
\$2,000

Hillforest Historical Foundation

Hillforest Museum programming improvement expenses. City of Lawrenceburg Community Grant Program.
\$3,500

Hillforest Historical Foundation

Hillforest Museum operating expenses. Heart of Gold Grant Program.
\$625

Lawrenceburg Main Street

2010 Winter Wonderland. City of Lawrenceburg Community Grant Program.
\$28,350

COMMUNITY AND PUBLIC BENEFIT

Dearborn-Ohio County Prosecutor's Office.

Two laptops and software. City of Aurora Grant Program
\$3,000

People Working Cooperatively, Inc.

Emergency repair program for low-income homeowners in Dearborn County. County Progress Grant Program.
\$5,000

Aurora Lions Club

2010 Farmer's Fair Management Expenses. City of Lawrenceburg Community Grant Program.
\$40,000

St. Leon Volunteer Fire Department, Inc.

Rescue Equipment and Turn-out gear. City of Lawrenceburg Community Grant Program.
\$24,882

Miller York Volunteer Fire Department

New Pumper Truck. City of Lawrenceburg Community Grant Program.
\$89,264

People Working Cooperatively, Inc.

Whole house home repair program in Dearborn County. City of Lawrenceburg Community Grant Program.
\$25,000



DCF AWARDS \$2.6 MILLION IN GRANTS DURING 2010

Dearborn Community Foundation (DCF) awarded approximately 140 grants totaling \$2.6 million to non-profit organizations in 2010. The grants support the needs/interests of the community in the fields of, Art, Culture and Humanities, Community and Public Benefit, Education, Environment and Animal Protection, Human Services, and Youth Programs.

The Foundation considers awarded grants to be investments in our community. DCF grants benefit the community in a variety of ways. Grants support projects/programs ranging from operations of Dearborn County food pantries and the after-school program at the Lawrenceburg Community Center to ballpark and park upgrades at youth sports facilities and the start-up costs of the Dearborn County Superior Court's JCAP (Jail Chemical Addiction Program) Program for women.

The majority of Foundation funds awarded to non-profit organizations are discretionary grants for which DCF conducts a competitive review and decision-making process. The remaining grants are awarded based on recommendations by donors and are paid out of endowment funds established by donors. Figures for grants awarded in 2010 also include grants administered by DCF for the Lawrenceburg Schools Endowment Corporation.

Dillsboro Volunteer Fire Department

New SCBA units. City of Lawrenceburg Community Grant Program.
\$57,280

St. Martin Catholic Church

Renovation of Community Building. City of Lawrenceburg Community Grant Program.
\$32,452

Manchester Volunteer Fire & Rescue, Inc.

New fire truck and equipment. City of Lawrenceburg Community Grant Program.
\$100,000

City of Aurora

Cost of structural engineering plan for Crescent Brewery Park. City of Lawrenceburg Community Grant Program.
\$10,800

Aurora Riverfront Beautification, Inc.

2010 "A Roar of Thunder" Regatta. City of Lawrenceburg Community Grant Program.
\$5,000

Dearborn County Parks & Recreation Department

Zero-turn mower, trailer and brush cutter. City of Lawrenceburg Community Grant Program.
\$17,672

Bethlehem Evangelical Lutheran Church

Kitchen renovation for pre-school program and church hall. City of Lawrenceburg Community Grant Program.
\$15,000

Bright Volunteer Fire Department, Inc.

Purchase of three emergency generators. City of Lawrenceburg Community Grant Program.
\$30,000

Dearborn County Sheriff's Department

Crime scene response vehicle and CSI unit. City of Lawrenceburg Community Grant Program.
\$42,134

City of Greendale

Aerial ladder fire truck. City of Lawrenceburg Community Grant Program.
\$65,774

Dearborn Adult Center

Program support. City of Lawrenceburg Community Grant Program.
\$10,000

Dearborn County Social Council /RSVP

Purchase of van to replace one that was destroyed in a fire. City of Lawrenceburg Community Grant Program.
\$20,216



The Dearborn County Sheriff's Department received \$42,134 from the Lawrenceburg Community Grant Program for a crime scene response vehicle and CSI unit. Sheriff Mike Kreinhop tries out some equipment in a squad car.

Town of Dillsboro

Park Shelter House. City of Lawrenceburg Community Grant Program.
\$100,000

Historic Hoosier Hills RC&D, Inc.

Indiana Historic Film Project. City of Lawrenceburg Community Grant Program.
\$25,000

American Legion Post #239

Air conditioning units and thermostats. City of Lawrenceburg Community Grant Program.
\$7,095

Indiana State Police South Zone ERT

Emergency Response Team weapon lights. City of Lawrenceburg Community Grant Program.
\$11,630

Dearborn County Department of Transportation & Engineering

Construction of salt bin for Dearborn County. City of Lawrenceburg Community Grant Program.
\$100,000

American Legion Post # 239

Washington D.C. trip for Vietnam Vets of Dearborn County. City of Lawrenceburg Community Grant Program.
\$17,500

Greendale Cemetery Association

Computerized cemetery record management system. City of Lawrenceburg Grant Program.
\$49,827

Lawrenceburg Conservancy District Community Athletic Park, Inc.

Playground, park and ball field equipment. City of Lawrenceburg Community Grant Program.
\$100,000

Dearborn County Parks & Recreation Board

Playground equipment at Guilford Park. City of Lawrenceburg Community Grant Program.
\$43,162

Beautification of Dillsboro, Inc.

Heritage Pointe town clock project . City of Lawrenceburg Community Grant Program.
\$30,000

Aurora Police Department

In-car digital camera systems. City of Lawrenceburg Community Grant Program.
\$53,140

Fairhaven Apartments, Inc.

Purchase and installation of Safe Steps in bathtubs of apartments. City of Lawrenceburg Community Grant Program.
\$30,000

City of Aurora

Playground equipment for Lesko Park. City of Lawrenceburg Community Grant Program.
\$46,975

Dearborn County 4-H Association, Inc.

Fair management cost for the 2011 Dearborn County 4-H and Community Fair. City of Lawrenceburg Community Grant Program.
\$51,000

EDUCATION

St. Mary's School

Book publishing for Young Author's Writing program . Sprint Excellence in Education Grant Program.
\$125

South Dearborn Dollars For Scholars

South Dearborn Challenge Scholarship Program. City of Aurora Grant Program.
\$5,000

Water Rescue, Inc.

Expansion of preschool and elementary water safety education program for Bobby the Boat. City of Aurora Grant Program.
\$3,000

St. Mary's School

Replacement of chalk boards with marker boards. City of Aurora Grant Program.
\$2,000

Indiana University East (IUE)

Start up costs for partnership with IUE and Ivy Tech to provide Bachelor of Communications Degrees in Dearborn County. City of Lawrenceburg Community Grant Program.
\$54,100

South Dearborn High School

Hallway security cameras. City of Lawrenceburg Community Grant Program.
\$13,126

Indiana University East (IUE)

Start up costs for partnership with IUE and Ivy Tech for Transition to Teaching Program. City of Lawrenceburg Community Grant Program.
\$21,577

South Dearborn Dollars For Scholars (SDDFS)

SDDFS Scholarship Program. Heart of Gold Grant Program.
\$625

Sunman-Dearborn Community School Corporation

Professional development for teachers. Heart of Gold Grant Program.
\$625

St. Lawrence School

School wide Phone/PA system. City of Lawrenceburg Community Grant Program.
\$10,000

Cincinnati Fire Museum

Fire safety education programs. City of Lawrenceburg Community Grant Program.
\$3,500

American Red Cross – Dearborn and Ohio Counties

Equipment and supplies for CPR and first aid classes. City of Lawrenceburg Community Grant Program.
\$4,267

ENVIRONMENT & ANIMAL PROTECTION

Partners for Animal Welfare Society of Dearborn County

Spay/Neuter Programs for shelter animals. City of Lawrenceburg Community Grant Program.
\$5,000

Partners for Animal Welfare Society of Dearborn County

Spay/Neuter Programs for shelter animals and stray, barn and feral cats. City of Lawrenceburg Community Grant Program.
\$14,000

City of Greendale

2011 Arbor Day Celebration. Sprint Excellence in Education Grant Program.
\$1,000

Dearborn County Solid Waste Management District (DCSWMD)

Purchase of two acres of land with building adjacent to DCSWMD property for storage and expansion. City of Lawrenceburg Community Grant Program.
\$41,250

HUMAN SERVICES

Dearborn County Clearing House

Purchase of Thanksgiving and Christmas turkeys and hams. City of Lawrenceburg Community Grant Program.

\$5,000

Farmers and Hunters Feeding the Hungry

Processing costs of deer to be donated to Dearborn County food pantries. City of Lawrenceburg Community Grant Program.

\$2,500

American Red Cross – Dearborn & Ohio Counties

Disaster assistance for Aurora residents. City of Aurora Grant Program.

\$2,000

Dearborn & Ohio Co. Prevent Child Abuse Council

Charitable works of the organization. Women Empowering Women Grant Program.

\$500

Safe Passage, Inc.

Charitable works of the organization. Women Empowering Women Grant Program.

\$1,000

Directions! Program of the Community Mental Health Center

School age educational and community awareness programs focused on sexual assault and domestic violence. Women Empowering Women Grant Program.

\$500

Dearborn County Clearing House

Office supplies and equipment for location expansion. City of Lawrenceburg Community Grant Program.

\$4,500

Thrivent for Lutherans-Dearborn County Chapter

2010 Food for Kids Against Hunger Event for Dearborn County Residents. City of Lawrenceburg Community Grant Program.

\$5,000

Region 15 Children’s Advocacy Center, Inc.

Medical exam room equipment. City of Lawrenceburg Community Grant Program.

\$23,625

Pregnancy Care Center

Educational materials and supplies for Earn While You Learn Incentive Parenting Program. City of Lawrenceburg Community Grant Program.

\$5,000

Lifeline Youth & Family Services, Inc.

Laptop, printer, accessories and training for additional staff person to serve Dearborn County families. City of Lawrenceburg Community Grant Program.

\$1,035

Safe Passage, Inc.

Purchase of vehicle to transport clients and their children living in the Safe Passage shelter. City of Lawrenceburg Community Grant Program.

\$12,000

Community Mental Health Center, Inc.

Purchase of computer and electronic hardware for final and full implementation of electronic health record system. City of Lawrenceburg Community Grant Program.

\$69,313



DCF grants make a difference in Arts, Culture & Humanities; Community & Public Benefit; Education; Environment & Animal Protection; Human Services; and Youth Programs.

Dearborn County Hospital Foundation, Inc.

For the charitable works of the Dearborn County Hospital Foundation. Community Health and Wellness Donor Advised Grant.

\$1,075

Dearborn County Superior Court II

Start up costs for the Women’s JCAP (Jail Chemical Addiction Program). City of Lawrenceburg Community Grant Program.

\$88,000

North Dearborn Pantry, Inc.

Purchase of Box Truck with lift gate. Proactive Grant.

\$2,000

SIEOC Child Care Resource & Referral

Training kit material for Stewards of Children program. City of Lawrenceburg Community Grant Program.

\$515

SIEOC Child Care Resource & Referral

Printing and postage costs for invitations and registration forms for the 15th Annual Prevent Child Abuse Conference. City of Lawrenceburg Community Grant Program.

\$500

Community United Methodist Church

Purchase of food items for the food pantry. City of Lawrenceburg Youth Program.

\$1,000

North Dearborn Pantry

Purchase of food items for the food pantry. City of Lawrenceburg Youth Program.

\$1,000

St. Vincent de Paul

Purchase of food items for the food pantry. City of Lawrenceburg Youth Program.

\$1,000

Dearborn County Clearing House

Purchase of food items for the food pantry. City of Lawrenceburg Youth Program.

\$1,000

Dillsboro Community Food Pantry

Purchase of food items for the food pantry. City of Lawrenceburg Youth Program.

\$1,000

Moore’s Hill First Baptist Church

Purchase of food items for the Moore’s Hill Community food pantry. City of Lawrenceburg Youth Program.

\$1,000

Heart House, Inc.

Emergency operating funds. Proactive Grant.

\$8,000

North Dearborn Pantry, Inc.

Operating expenses of the organization. Rupel Family Donor Advised Fund Grant

\$1,000

Laughery Valley Fraternal Order of Police Lodge 146

2010 Shop with a Cop Program for needy children of Dearborn County. Lawrenceburg Youth Grant Program.

\$10,000

Warm the Children

Funds to be used for the purchase of clothing for needy children of Dearborn County. Lawrenceburg Youth Grant Program.

\$8,900

Youth Encouragement Services, Inc.

Funds to purchase items needed for children that reside at the Y.E.S. Home. Lawrenceburg Youth Grant Program.

\$2,500

Heart House

Funds to purchase food, clothing and toys for children that reside at the Heart House. Lawrenceburg Youth Grant Program.

\$2,500

Warm the Children

Funds to be used for the purchase of clothing for needy children. Rupel Family Donor Advised Fund Grant.

\$1,000

YOUTH PROGRAMS

Special Olympics Indiana, Inc.

Heaters, signage and rental of tents for 2011 Polar Plunge event. City of Lawrenceburg Youth Grant Program.
\$5,000

Special Olympics Indiana, Inc.

Laptop and software to enhance sound system for events. Heart of Gold Grant Program.
\$625

Dearborn County Social Council c/o RSVP

2010 Halloween Sensation. City of Lawrenceburg Youth Grant Program.
\$3,200

Lawrenceburg Community Center

Equipment and supplies for the after school program. City of Lawrenceburg Youth Grant Program.
\$3,000

Lawrenceburg High School

2010 Lawrenceburg High School After Prom. City of Lawrenceburg Youth Grant Program.
\$3,000

South Dearborn Pee Wee Football

Repair and replacement of football equipment and purchase of jerseys. City of Lawrenceburg Youth Grant Program.
\$10,000

Aurora Lions Club

2010 Easter, Halloween and Christmas youth events. City of Lawrenceburg Youth Grant Program.
\$10,000

East Central High School

2010 East Central After Prom. City of Lawrenceburg Youth Grant Program.
\$3,000

Dearborn County Girls Softball, Inc.

Equipment, uniforms and umpire costs for 2010. City of Lawrenceburg Youth Grant Program.
\$10,000

Dillsboro Summer Recreation, Inc.

Uniforms and umpires for the 2010 season. City of Lawrenceburg Youth Grant Program.
\$10,000

Aurora Little League Baseball

Purchase of fencing, equipment, pitching machine, and first aid kits. City of Lawrenceburg Youth Grant Program.
\$7,600

Lawrenceburg Babe Ruth League, Inc.

Equipment, uniforms, umpires, and insurance for 2010 season. City of Lawrenceburg Youth Grant Program.
\$10,000

Dearborn County Girls Softball, Inc.

Uniforms and umpires for 2010 season. City of Aurora Grant Program.
\$3,000

South Dearborn Babe Ruth League, Inc.

Umpire fees for 2010 season. City of Aurora Grant Program.
\$4,000

South Dearborn Pee Wee Football

Storage building window replacement and jerseys. City of Aurora Grant Program.
\$5,000

Aurora Little League Baseball

Uniforms and baseballs for 2010 season. City of Aurora Grant Program.
\$5,000



Boy Scouts of America Troop 637 received a \$7,000 grant from the City of Aurora Grant Program for the purchase of a used school bus for troop trips .

Aurora Soccer Association, Inc.

Aurora soccer field development. City of Aurora Grant Program.
\$5,000

Boy Scouts of America Troop #637

Purchase of bus for troop. City of Aurora Grant Program.
\$7,000

South Dearborn Babe Ruth League, Inc.

Uniforms, insurance, baseballs and equipment for 2010 season. City of Lawrenceburg Community Grant Program.
\$5,000

Special Olympics Indiana, Inc.

Portable sound system for events. County Progress Grant Program.
\$7,284

Lawrenceburg Lions Club

Expenses for 2010 Little League Baseball season. City of Lawrenceburg Community Grant Program.
\$5,000

Sunman Dearborn Youth Athletic Association

Pitching machines, field equipment and baseballs. City of Lawrenceburg Community Grant Program.
\$4,657

South Dearborn High School

Football safety equipment. City of Lawrenceburg Community Grant Program.
\$25,459

Aurora Soccer Association, Inc.

Aurora soccer field development. City of Lawrenceburg Community Grant Program.
\$100,000

Dearborn County 4-H Club Association

4-H program and fair supplies. City of Lawrenceburg Community Grant Program.
\$48,842

Lawrenceburg Greendale Soccer Club

Referee fees, SAY fees, equipment and field maintenance costs. City of Lawrenceburg Youth Grant Program.
\$10,000

Aurora Soccer Association, Inc.

Aurora soccer field development. City of Lawrenceburg Youth Grant Program.
\$10,000

Lawrenceburg Lions Club

Umpire fees for 2010 Little League Baseball season. City of Lawrenceburg Youth Grant Program.
\$4,200

Dearborn County 4-H Club Association

2010 program supplies and materials. City of Lawrenceburg Youth Grant Program.
\$10,000

Lawrenceburg Community Center

Equipment and supplies for the after school program. City of Lawrenceburg Youth Grant Program.
\$5,300

South Dearborn High School

SDHS Choral equipment. County Progress Grant Program.
\$10,000

South Dearborn High School

Softball field safety renovation. City of Lawrenceburg Community Grant Program.
\$31,000

South Dearborn Pee Wee Football

Purchase and installation of field lighting. City of Lawrenceburg Community Grant Program.
\$35,370

Hidden Valley Lake Athletic Club

Soccer bleachers, uniforms, and equipment. City of Lawrenceburg Youth Grant Program.
\$10,000

FOUNDATION AWARDS MORE THAN \$340,000 IN SCHOLARSHIPS

Through the generosity of donors, the Dearborn Community Foundation, Inc., (DCF) was able to encourage higher education and lower the cost of post-secondary schooling for many in Dearborn County by awarding more than 230 scholarships totaling approximately \$344,000 in 2010.

LILLY ENDOWMENT COMMUNITY SCHOLARSHIP

The purpose of the Lilly Endowment Community Scholarship Program is to help raise the level of educational attainment in Indiana and to leverage further the ability of Indiana's community foundations to enhance the quality of life of the state's residents.

Since the Lilly Endowment Community Scholarships were first offered in 1998, the Dearborn Community Foundation, Inc. (DCF) has been pleased to award the scholarships to Dearborn County students graduating from high school. In 2010, DCF was eligible to nominate recipients and alternates for two full-tuition scholarships. The Lilly Endowment, Inc. program provides scholarships for full tuition, required fees, and a special allocation of up to \$800 per year for required books and equipment for four years of undergraduate study on a full-time basis, leading to a baccalaureate degree at any Indiana public or private college or university accredited by the North Central Association of Colleges and Schools



Jessica Ruschke

Carissa Wyatt

The 2010 Lilly Endowment Community Scholars: **Jessica Ruschke**, a graduate of East Central High School, is currently attending St. Joseph's College. **Carissa Wyatt**, a graduate of Lawrenceburg High School, is currently attending Purdue University.

DENISE ANN BEYER MEMORIAL SCHOLARSHIP

The intent of this scholarship is to provide financial assistance to a deserving South Dearborn High School student who has the academic foundation, sincere desire and motivation to complete a four-year college program. The recipient must be planning to pursue a degree in a math or science related field, including but not limited to: computers, engineering, economics, business, pharmacy, nursing or teaching science/math/computers. The 2010 recipient of the \$500



memorial scholarship was **Brooke Cutter**.

MICHAEL CLEARY MEMORIAL SCHOLARSHIP

This scholarship was started in memory of Michael Cleary, who was killed in an auto accident in January 2000. At the time, Mike was a freshman at East Central High School. He enjoyed being with his friends, football, hiking, camping, tearing things apart, and rebuilding them, but his greatest passion was snow skiing. Mike had a good heart and was always willing to help where there was a need. The recipient of the 2010 scholarship in the amount of \$500 was **Autumn Menkedick**

ROSS EILER MEMORIAL SCHOLARSHIP

This scholarship was started in memory of Ross Eiler, who was killed in an auto accident in April of 2001. Ross graduated from Lawrenceburg High School in 2000. While in school, he excelled in academics, sports, leadership and service commitment. Ross' family and the Lawrenceburg Schools Endowment Corporation wish to recognize the values that Ross exemplified through the establishment of this fund. The 2010 recipient of the \$1,000 scholarship was **Jacob Bezold**.

CLIFFORD AND GLADYS ELLERBROOK ENDER NURSING SCHOLARSHIP

The purpose of this scholarship is to help ensure that the nursing care needs of the residents of Dearborn and Ohio counties are satisfied. To accomplish this, people must be adequately educated and trained. This scholarship program is created to assist interested people in meeting the expenses required of that education and training and who meet specific eligibility criteria. During 2010, **Laura Wagner** was awarded a scholarship

in the amount of \$1,000, **Carina Lewis** and **Erica Wright** were each awarded a scholarship in the amount of \$800, **Suzu Hyde** was awarded a scholarship in the amount of \$700, and **Jennifer Bruner** was awarded a scholarship in the amount of \$500.

ROGER GULLEY MEMORIAL SCHOLARSHIP

This scholarship was established in memory of Roger Gulley, who was killed in an auto accident in 1962. Roger was only a sophomore at Aurora High School at the time of his tragic death. He was a very active young man with a fighting spirit. He was a good sport who believed in fair play. He was full of integrity, loyalty and faith. He loved life and having fun. This scholarship honors a South Dearborn High School student who shares Roger's attributes and most certainly his love for music. The 2010 recipient of the \$100 scholarship was **Whitney Creemer**.

IVY TECH SCHOLARSHIP

The Dearborn Community Foundation has chosen to encourage Dearborn County residents to improve their level of educational attainment locally. Educational grants are awarded to continuing Ivy Tech State College students. In 2010, **Nicholas Busken** was awarded a scholarship in the amount of \$800 and **Jonathon Gardner** was awarded a scholarship in the amount of \$400.

DAN KUEBLER MEMORIAL SCHOLARSHIP

This scholarship was established in memory of Dan Kuebler, a teacher, principal and superintendent, whose career as an educator spanned more than 30 years. Mr. Kuebler passed away in August 2007 after serving as a teacher, principal and, most recently, as Superintendent of Lawrenceburg

Community School Corporation. As an educator and in his personal life Dan excelled as a leader and good citizen in his community. This scholarship was created to recognize a Lawrenceburg High School graduate with the same values Dan exemplified. The 2010 recipient of the \$500 scholarship was **London Grimes**.

LAUGHERY VALLEY FRATERNAL ORDER OF POLICE SCHOLARSHIP

The Laughery Valley F.O.P. Lodge #146 awards up to two separate scholarships to each of the following school districts (including home school students):

- Lawrenceburg (LHS),
- South Dearborn (SDHS),
- Sunman-Dearborn (ECHS), *AND*
- Rising Sun (RSHS)

Scholarships are awarded to individuals planning to pursue a four-year baccalaureate degree at an accredited college or university *and/or* a two-year technical program certificate at an accredited institution. The 2010 recipients of the \$500 scholarships were, **Jennifer Abplanalp** of ECHS, **Jacob Bezold** of LHS, **Amber Griffith** of SDHS, **Alex Mitchell** of SDHS, **Abbey Rimstidt** of RSHS, **Paul Tremain** of LHS, and **Josie Weiler** of ECHS.

CITY OF LAWRENCEBURG EDUCATIONAL GRANT

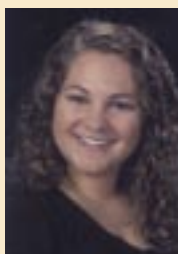
It is the City of Lawrenceburg's intent through the Lawrenceburg Educational Grant Program to financially assist eligible graduates of Lawrenceburg High School who pursue a post-secondary education which includes, but is not necessarily limited to, any 4-year school, 2-year school, 1-year certificate program or apprenticeship program. The program began with the Class of 2002. Students give back to the community through volunteer service during their high school years as part of the eligibility requirements. Some of the organizations that students have volunteered for include Big Brothers/Big Sisters of Dearborn County, PAWS, and Special Olympics. Educational funds are renewable for up to four years as long as the student continues to meet all established eligibility criteria. Educational grants for the year 2010 were \$1,800 per recipient. A total of 169 students received this grant for the 2010/2011 school year totaling approximately \$304,000 in educational grant awards.

LAWRENCEBURG KIWANIS CLUB SCHOLARSHIP

The Lawrenceburg Kiwanis Club was established as one of the first Kiwanis Clubs in the world on January 27, 1923. This club has been serving the community for more than 85 years. Kiwanis has a long history of commitment of improving the lives and welfare of children and young adults. The 2010 recipient of this \$500 scholarship was **Travis Hawkins**.

GERRY LEHN MEMORIAL SCHOLARSHIP

This scholarship was established in 2008 to honor the memory of Gerry Lehn who died following a lung transplant in October 2007. Gerry was an avid fan of youth and high school athletics. With camera in hand, he was always



Megan Bischoff



Emily Greive



Sarah Sanford



Rachelle Sowers

DEARBORN COMMUNITY FOUNDATION EDUCATIONAL GRANT

The Dearborn Community Foundation, Inc. recognizes the outstanding abilities of the Lilly Endowment Community Scholarship Program finalists. The Board of Directors has chosen to award \$1,000 to the finalists from each school corporation area. The educational grants are renewable for up to four years providing the recipient maintains at least a cumulative 2.0 GPA. The 2010 finalists were:

Megan Bischoff, East Central High School graduate

Emily Greive, South Dearborn High School graduate

Sarah Sanford, Lawrenceburg School graduate

Rachelle Sowers, South Dearborn High School graduate

present at Lawrenceburg High School athletic events in which his three sons were involved. Gerry always had a special place in his heart for athletes that regardless of ability played with all of their heart. This scholarship honors a student that demonstrates the attributes that brought Jerry the most joy. The 2010 recipient of this \$1,000 scholarship was **Travis Hawkins**.

JAMES LOHMILLER MEMORIAL SCHOLARSHIP

This scholarship was established in 2010 in memory of James Lohmiller, who went by the name of "Jaymie". He died at the age of 20 in May 2009 by an accidental drug overdose. He graduated from Lawrenceburg High School in 2008. Jaymie enjoyed fishing, football, wrestling, and playing chess. He had a warm heart, a gentle soul, and was always willing to help others. The 2010 recipient of the \$500 scholarship was **Travis Hawkins**.

FRANK R. LONGCAMP SCHOLARSHIP

The Frank R. Longcamp Scholarship was established with the Foundation in 2006 as part of a trust transferred from a local banking establishment.

Mr. Longcamp wanted to leave a legacy following his death that would help deserving students fulfill their post-secondary educational goals. Three scholarships in the amounts of \$800 each were awarded through DCF in 2010. The 2010 recipients were **Amber Griffith** of SDHS, **Jeffery Schoenberger** of ECHS, and **Sarah Sunderman** of LHS.

PARTNERS IN EDUCATION SCHOLARSHIP

The Lawrenceburg Schools Endowment Corporation, in partnership with Dearborn Savings Association and United Community Bank, awards 10 Achievement Scholarships to graduating seniors of Lawrenceburg High School who will enroll in an institution of higher learning in a four-year or any post-secondary institution of higher learning. The recipients of the 2010 scholarships in the amounts of \$1,000 each were **Katie Banschbach**, **Jacob Bezold**, **Luke Brookbank**, **Cole Gooding**, **London Grimes**, **Megan Harrell**, **Cody Lewis**, **Ben Saylor**, **Paul Tremain**, and **Kelsie Wilson**.

PERPETUAL ROTARY SCHOLARSHIP

For over 50 years, there was an active Rotary Club in Aurora. At the time that the club disbanded in 1999, it had its own Aurora Rotary Scholarship Foundation. The club membership voted to end its own foundation and turn the assets over to the Dearborn Community Foundation. Because of this, the Rotary is able to keep a presence in the community and continue to help with scholarship funds for South Dearborn High School students. The 2010 recipient of the \$500 scholarship was **Emily Berning**.

RONALD SELMEYER SCHOLARSHIP

Ronald Selmeyer, a former Greendale City Councilman, was nominated and awarded the 1999 Hometown Leadership Award through the Wal-Mart Foundation. With this award from Wal-Mart, Mr. Selmeyer established the Ronald Selmeyer Scholarship. Mr. Selmeyer passed away in 2007, but his legacy of leadership continues through this scholarship. The 2010 recipient of the \$500 scholarship was **Travis Hawkins**.

DR. JIM SWANSON SCHOLARSHIP

Dr. Jim Swanson has been committed to making a difference in individuals' lives through his medical practice. He elected to establish this scholarship in 2005 in a continued effort to make a difference in the lives of students with disabilities who are interested in pursuing post-secondary educations. The 2010 recipient of the \$500 scholarship was **Jamie Hennies**.

WOMEN EMPOWERING WOMEN (wEw) SCHOLARSHIP

Women Empowering Women (wEw) is a Dearborn County initiative of women joining together to empower women to become active, informed, and responsible members of their community. The scholarship was established in 2010 as part of the effort to empower women in Dearborn County to improve their lives through education. The scholarship is for the non-traditional female student who has not had the opportunity to attend college or complete their post-secondary education started previously in life. The 2010 recipient of the \$500 scholarship was **April Fritch**.

BUSINESS ORGANIZATIONS AND INDIVIDUALS HONORED AS “FRIENDS OF THE FOUNDATION”

The Dearborn Community Foundation (DCF) tries to recognize individuals, organizations or businesses that have been strong supporters of the Foundation for a significant period of time. These long time supporters of the Foundation come from all corners of Dearborn County and have a history of strong involvement in the community.

2010 Honorees

Aurora Casket Co., Inc. & The Barrott Family have been long time supporters of the Foundation whether through endowment contributions or sponsoring the annual golf scramble. Knowing the importance of endowment, in 2009, the Barrott Family established The Barrott Family Scholarship Fund to support the Barrott Family Scholarship with South Dearborn Dollars for Scholars.

Historic Hoosier Hills RC&D, Inc. in the summer of 2009 established an endowment to support the charitable works of Historic Hoosier Hills RC&D.

Ivy Tech Foundation decided in the spring of 2009 to establish an endowment to support scholarships for students that attend Ivy Tech Community College.

UCB Charitable Foundation has been a strong supporter of the Foundation for many many years. Grants have been made to the Foundation to help support its operations through the operating endowment and its annual golf scramble. UCB Charitable Foundation has also contributed to endowments at DCF that support other charitable organizations.

U.S. Bank’s support of DCF goes back to the Foundation’s roots. The Foundation’s first office was provided by U.S. Bank in their Walnut Street office in Lawrenceburg. The bank has also been an annual contributor to the Foundation’s operating fund for more than 12 years.



There were five recipients of the DCF Friend of the Foundation Award at the annual Donor Appreciation Reception in 2010. Foundation President Mark Graver, right, presented the award to Jason Barrott, who represented Aurora Casket Company and the Barrott Family.

Friends of the Foundation Honorees:

1997 Charles W. Lehner

1998 Lisa deHart Lehner

1999 Richard Ullrich, Jr.

2000 Mark Neff, Dellas Ross

2001 John Maxwell

2002 Jim Deaton, E.G. McLaughlin

2003 Dr. Frank Frable, James Rupel

2005 Mike Kramer, Jim Helms

2006 Leaders of City of Aurora, Dearborn County & City of Lawrenceburg

2007 Argosy Casino & Hotel, Pi Chapter of Kappa Kappa Inc. of Lawrenceburg, Rupel Family & Hidden Valley Golf Club

2009 Aurora Public Library District, Dillsboro Volunteer Fire Department, Main Street Aurora, and South Dearborn Dollars For Scholars

2010 Aurora Casket & The Barrott Family, Historic Hoosier Hills RC&D, Inc., Ivy Tech Foundation, UCB Charitable Foundation, and U.S. Bank.

INTERN HELPS DCF PROMOTE CAREER PATHWAY DEVELOPMENT

DCF’s first intern through the Lilly Endowment Inc.’s Community Foundation Internship Program was Allison Kahny of Guilford. Kahny served as the Foundation’s paid intern during both summer and fall college semesters in 2010.



Allison Kahny

She worked closely with EcO15 Coordinator Mark Neff to help promote career pathway development in the community as a part of the regional EcO15 initiative, which was also funded by Lilly Endowment. The initiative is aimed at moving all residents of our community at least one level in education.

Kahny’s major project as intern was to work with Neff to promote career pathway development for kindergarten through third-grade students in Dearborn County. She used her computer skills, writing ability and past education experience in early childhood development to create “Carrie the Career Caterpillar,” a PowerPoint-style presentation on career pathways that was a perfect fit for pre-Kindergarten through third-grade students. The presentation also included the use of a portable interactive “white board,” which students could actually touch the board and learn about different careers. She used a huge stuffed caterpillar as a prop to get the youngsters’ attention.

Kahny was a great fit especially for promoting career pathway development

in the healthcare field, as she attended Ivy Tech Community College in Lawrenceburg. In late 2010, she completed her academic major in Medical Assisting and has since passed the state exam to become a Certified Medical Assistant. Her goal was to continue her education to work toward becoming a pediatric nurse.

Kahny also worked with the DCF staff to update grantee/donor databases among several other projects, said Fred McCarter, DCF Executive Director. “The goal was to provide Allison with a well-rounded experience in the real work world, while at the same time completing important projects that benefit our community and the Foundation,” he said. “Allison did a fantastic job!”

2010 CONTRIBUTORS

3D Mart
A&E Management, Inc. (McDonalds)
Acapulco Mexican Restaurant
American Structurepoint
Sandra Ante
Elizabeth Armbruster
Aurora Casket Company
Aurora Lions Club
Aurora Public Library District
Hon. Judge John G. Baker
John C. & Helen Firmani Barrott
Andrew Baudendistel
Rusty Baudendistel
Benner Walsman Scholarship Fund
Joshua & Amanda Bennett
Sara Berning-Davis
Beta Sigma Phi-Laureate Beta PL2458
Brandon Bischoff
Dana Blank
Bourbon's Bar & Grill
Winnie Bowling
Kenneth and Barbara Boyer
Charles Brandel
Sarah Brichto
Cheryl Brinkman
Carousel Cleaners Inc.
Cincinnati Reds
City of Aurora
City of Lawrenceburg
Clifton Gunderson Financial Services
Community Mental Health Center, Inc.
Rachel Cutter
D & D Vending, Inc.
Jim Davis
Dearborn Co. Historical Society
Dearborn County 4-H Club Association
Dearborn County Chamber of Commerce
Dearborn County Convention, Visitor & Tourism Bureau
Dearborn County Economic Redevelopment Commission
Dearborn County Farm Bureau
Dearborn Savings Bank
Dearborn Title Insurance, Inc.
Jim Deaton
Lynn Deddens
Barbara Dehner
DeVille Pharmacies, Inc.
Luella Dixon
Edward D. Jones Co.
Ewan Law Office
Andrea Ewan
Extreme Definition Hair Studio
Sandra Fairfield
FCN Bank
Fields IGA Dillsboro
Rick & Mary Fields
Dr. Frank Frable
Friendship State Bank
Alyson Glaze
Grand Oak Golf Club
Grand Victoria Casino & Resort by Hyatt
Ruth Gray
Carol Green
Greendale Cinemas
Wayne Hamon
Ted Harmeyer
Peggy Hartlaub
Hava Java
Jim & Charlotte Helms
Heritage Fund of Bartholomew Co
JoAnn Heurich
Hillforest Historical Foundation
Hollywood Casino Lawrenceburg
William Hoyt
Independent Colleges of Indiana
Indiana Farm Bureau Insurance
Indiana Grantmakers Alliance
Indiana Michigan Power
Indianapolis Colts
Ivy Tech Community College
Kentucky Speedway
Barbara Koch

Jon S. Kohlmeier
Mary Margaret Kraut
Lynn Krebs
Mary Kroger
LaRosa's
Laughery Valley Fraternal Order of Police
Lodge 146
Lawrenceburg Chevrolet
Lawrenceburg Lions Club
Lawrenceburg Schools Endowment Corp.
Gail Laws
Jeff and Susan Lewis
Deb Locke
Jeane Lovelace
MainSource Insurance
Mattlin Construction Inc
McCabe's Greenhouse & Floral
McLane Company, Inc
Mellott & Mellott, P.L.L.
Merchants Bank & Trust Co.
Michael's College of Hair Design
Miller-York Volunteer Fire Dept.
Elizabeth Morris
Judy & Keith Mosier
Ron & Andrea Nappier
Mark & Janice Neff
New Horizons Rehabilitation, Inc.
Newport Aquarium
Nexigen Communications
Gerald & Dorothy Nixon
Jane Noel
Nonna B Cookies
Stephanie Nutley
Open Door Thrift Store
Brian Oyler, D.D.S.
Indiana Pacers
Pinnacle Advisory Group
Ron and Bonnie Powell
Queen City Candy, Inc.
Nancy Ray
Virginia Ronnebaum
William G. & Norma Rudicil
Brad & Marcia Rupel
Janet Rupel
Jerry & Karla Schmeltzer
Cindy Schuette
Jim & Denise Sedler
Vicki Shroyer
Deborah A. Smith
Karen Snyder
South Dearborn Dollars For Scholars
Southeastern Beverages Inc.
St. John The Baptist Catholic Church
St. Joseph Catholic Church
St. Leon Volunteer Fire Department, Inc.
Jim & Sue Stock
Stratman Law Office
Sugar Ridge Golf Club
Dr. Jim Swanson
Cindy Taylor
Perry & Mary Pat Taylor
The Sign Store
Patsy Titkemeyer
Terri Toops
Trade and Industrial Supply
Floyd Trossman
UCB Charitable Foundation
Suzanne Ullrich
United Community Bank
US Bank
Brian & Karisa Voss
Votaw & Schwarz
Marjorie Waldon
Wal-Mart Super Center
Wellpoint Foundation
John & Cheryl Wessel
Mary J. Wethington
Melvin & Patricia Wilhelm
William Yelton, Inc.
Wood, Lamping & Lehner, LLP

MEMORIAL CONTRIBUTIONS

In Memory of Greg "Big Man" Andres

Berger Custom Exteriors
Daniel & Teena Bischoff
David & Janet Bischoff
Robert Bischoff
Tim Hiltz
Martin & Rebecca Hoog
Curtis & Beverly McQueen
North Dearborn Conservation Club
Jennifer Pragar
David & Marlene Vogelsang
Jared Vogelsang
Roger & Rosemary Weber
Jeffery & Brenda Wilhelm-Waggoner
James & Julie Wilhelm

In Memory of Hans Aune

Jean P. Skiff

In Memory of Dr. Leslie M. Baker

Arlene Wilgenbusch

In Memory of Glenn Beach

Mary Schafer

In Memory of Jack Carpenter

Rita Alig
Ryan & Melissa Allison
Betty & Chuck Andres
Luke & Kimberly Badinghaus
Bethany Bayley
Daniel & Denise Beckendahl
Jeffrey & Erin Bond
Hubert & Cecelia Boyer
John & Kathie Brater
Michael & Laura Tibbe Caudy
Frank & Connie Cleary
David & Karen Cody
John & Patricia Cole
Kevin & Jocelyn Collins
Tim & Michelle Decoursey
Alan & Rebecca Droege
Gordon & Nancy Fales
Frederick & Teresa Field
Jerry & Susan Geisler
Allen & Sandra Goodman
John & Allison Groce
Barb & Terry Grubbs
Dwight & Gayle Grubbs
Larry & Linda Horn Grubbs
Ruth Grubbs
Grubbs Construction
Jerry & Fern Hall
Heather Heidotting
Lester & Rozella Heitger
David & Bert Helfer
Sandra Henderson
Donald & Donna Hoffman
Timothy Hollstegge
Paul Horstman
Jim & Mary Howard
Brandon & Jen Huffman
Karen & Greg Huffman
David & Kristen Huisman
Barbara Inman
Lambert & Janet Ison
Ron Ison
Sonny Ison
William & Jean Ison
Donald & Nancy Iverson
Brent & Amy Jenkins
Lesley Jowett
William & Benita Kaffenberger
Doug & Luree Ketcham
Andrew & Susan Klare
Matthew Knoll
David & Susan Lattier
Porter & Patricia Leighton
Nancy Lillie
Robert & Patricia Lovins
Robert & Doreen Ludwig
James & Elyse Mansfield
Lewis & Margaret Masters

Polly Maucher
John & Robin Maxwell
Randy Maxwell
Jim & Chris McMichael
Lowell & Sharon McMillin
Timothy & Mary Morley
Robin & Ben Nishime
Thomas & Jennifer Parr
Mark & Tara Payton
Marie Piette
Jim & Donna Renck
Ann Schuerkamp
Robert A. Shaffer
Patricia Shearer
Jesse & Jeanie Smith
Cathleen Sopicak
Jon & Amanda Stenger
Larry & Kathleen Sturgill
Randy & Kathy Sturgill
Rick & Linda Sturgill
Ronald & Marianne Tackett
Sally Taylor
Thelma Taylor
Trihealth Q, LLC
Johannes & Mary Vanderloo
Robert & Barbara Vega
Becky & Bob Weaver
Wm. Michael & Brenda Wheat
Shawn Wilhelm
Leah Woolwine

In Memory of Michael Cleary

James & Melody Bohrer
Jennifer & Neil Clayton
Frank and Connie Cleary
Tarry Feiss
Fred & Jill McCarter
Clifford & Lois Pohle

In Memory of Ross Eiler

Ashley Eiler
Lynn & Camille Eiler
Mary Schafer
Nicholas Wunderlich

In Memory of Gladys Ender

Geraldine Stutz

In Memory of Dave Graver

Fred & Jill McCarter
Gerald & Dorothy Nixon

In Memory of Deborah Meyers Guss

Tina Cheek
Jeremy Dilts
James & Carolyn Meyers
Philip & Sharen Meyers

In Memory of PFC Craig A. Keller

Jerry & Stefanie Keller
Mary J. Keller
Pat Denier

In Memory of Calvin Klingelhoffer

Diana Lehner Miller

In Memory of Bill Kuebler

Cathy Albright
Jerry Carrier
Derald Ellinghausen
Gary & Kathleen Jenkins
Don Kroger
Bill & Connie Lakes
Milton Masing
Carolyn Pate
Steve & Connie Sandbrink
Patrick Savage
Vernon & Mary Ellen Waltz
Walter Wilson

In Memory of Dan Kuebler

Central Elementary School

In Memory of Gerry Lehn

Dorothy Behrens
Patricia S. Hons
Theodore & Lynn Johnson
Monica Kyle

(continued on page 15)

FOUNDATION HONORS VOLUNTEERS WITH 'HEARTS OF GOLD'

The Dearborn Community Foundation honored four community volunteers for having "Hearts of Gold" in 2010. The Heart of Gold recipients were recognized for touching the hearts of others through their volunteerism and other acts of kindness.

"Each honoree deserves this recognition for making a difference in our community in their own unique ways," said Fred McCarter, DCF Executive Director. "They are all role models for how all of us can make a difference in our community"

During the Heart of Gold reception, each of the four honorees nominated by others in the community and then chosen as Heart of Gold recipients by a Foundation Committee received the coveted Heart of Gold award. The honorees were also given the privilege of serving on the Heart of Gold Committee to further touch the hearts of others by awarding \$2,500 in proactive grants to non-profit organizations that serve Dearborn County.

In recent years, Heart of Gold recipients have been recognized for helping senior citizens or disadvantaged persons, working to improve the quality of education, expanding recreational or cultural opportunities, working with children, protecting the environment, promoting public safety and other acts of kindness.



Four individuals were honored with the Heart of Gold Award during the annual Donor Appreciation Reception in 2010: Sally Bender, Dillsboro; Gregory Townsend, Aurora; Nancy Gerber, Aurora; and Kimberly Weber, West Harrison.

DCF HEART OF GOLD RECIPIENTS AWARD GRANTS

The Heart of Gold Grants Committee Awarded a total of \$2,500 in grants to community organizations.

Hillforest Historical Foundation – to support the operations of Hillforest Historical Museum.

South Dearborn Dollars for Scholars – to support Dollars for Scholars South Dearborn Chapter of Scholarship America, Inc.

Special Olympics – towards the purchase of a laptop and software to enhance the sound system.

Sunman-Dearborn School Corporation – to support professional training of teachers in the school district.

2010 DCF CONTRIBUTORS (cont.)

Jeanne Lehn
Jonathan Lehn

In Memory of Patrick Loots
Lynn & Camille Eiler

In Memory of Jama Lothridge
Barbara Ankenbauer
William & Judy Arthur

Dr. & Mrs. Robert Barnhorn
Teresa Bushing and Rick Terrill
Kris & Erin Fairfield
Roger & Debbie Fehling
Paula Gilbert and Steve Cotherman
Debbie Granatir and Chad Harrison

Mark & Debra Graver
David & Judy Hizer
Michael & Betsy Jones
Douglas & Luree Ketcham
David & Betty Koehler
Bill & Connie Lakes
Sherry Lothridge

Fred & Jill McCarter
June McGraw
Gary Meyer
Sherry Midlam
Ron & Andrea Nappier
Mark & Janice Neff
Gerald & Dorothy Nixon
Don & Linda Pavy
Bruce Ranta
Jim & Denise Sedler

Robert Strautman and Laurie Baldrick
Randolph Turner
Nick & Judy Ullrich
John & Cheryl Wessel
Kila Wilson
Joyce Witte
Dennis York

In Memory of Russell Mallo
Fred & Jill McCarter
Ron & Andrea Nappier
John & Cheryl Wessel

In Memory of Michael Marine
American Legion #231

Kelly Boyd
Ruth Cheek
Tina Cheek
Vivian Cheek
William & Kay Cheek
Fraternal Order of Eagles
Tony & Amy Harris
Jodie & Daniel Jerger
Edward & Kelly Kanzleamar
Adrienne Lane
Lawrenceburg Eagles Aerie 2018
Leisure Pool & Spa, LLC
Lollipops & Rainbows Daycare & Enrichment Center
Andrea & Joseph Marine
Julie McConnell
Dale Moeller
David & Mary Rieman Sr.

Dr. Harley & Jascia Robinson
Beverly & Kenneth Strasemeier
Heather & Richard Strasemeier
Julie Strasemeier
Linda & David Todd
UCB
Thomas & Carol Wilson

In Memory of Dr. Marvin McClellan
Dearborn County Hospital
Dearborn County Hospital Medical Staff

In Memory of Rachael Meece
Broan NuTone
East Central High School
D. Neal & Monica Meece
Harriett A. Ryan
Brian & Dottie Scudder

In Memory of Robert L. Murray
Londalea Murray

In Memory of Lenore Brown Phillips
Jean Skiff

In Memory of Betty Podgornik
Douglas & Luree Ketcham

In Memory of Laura Busse Rahe
Melvin Rahe

In Memory of George Schafer
Mary Schafer

In Memory of Tina Shuter
Marie Dausch
Larry & Loraine Rumsey
Charlotte Shuter
Robert & Rita Sullivan

In Memory of Jack Spicer

Jada & Greg Ankenbauer
Charlie Blankenship
Dave & Michelle Deddens
Mark & Debra Graver
Jerry & Dee Hacker
Douglas & Luree Ketcham
John & Linda Maxwell
Sally Morris
Ron & Andrea Nappier
Mark & Janice Neff
Gerald & Dorothy Nixon
John Rumsey
Jim & Denise Sedler
Nick & Judy Ullrich
John & Cheryl Wessel

In Memory of Telford, Carrol & Doris Walker
Lee & Melinda Edgerton

CONTRIBUTIONS HONORING INDIVIDUALS

In Honor of Jada Ankenbauer
Jane Noel

In Honor of Elliot Harrison Ellis and Cassie
Jean Skiff

In Honor of Jane Noel
Jada & Greg Ankenbauer

In Honor of Louise Walker
Lee & Melinda Edgerton

DCF LEGACY SOCIETY HONOREES

The Dearborn Community Foundation's Legacy Society is a group of individuals who have made a dedicated effort to invest in our community through endowment at the Foundation. These honorees live in Dearborn County or have strong ties to our community.

DCF added six new members to the Legacy Society in 2010, bringing the total number of honorees to 61. Legacy Society members have contributed a significant charitable endowment at DCF to support charitable needs in our community. Some have established scholarship funds, while others have established donor-advised funds so that they can select a different charity to support with income from the endowment each year. Some select a specific charity to receive income from the endowment each year.

Legacy Society members have chosen to make a difference in our community today, knowing that their gifts will continue to give tomorrow and forever into the future..

2010 Honorees

Gary & Jennifer Lohmiller for the establishment of the James Lohmiller Memorial Scholarship Endowment Fund to provide scholarships to graduates of Lawrenceburg High School. The scholarship is in memory of their son James, a Lawrenceburg High graduate, who died of an accidental overdose in 2009.

D. Neal & Monica Meece for the establishment of the Rachel Meece Memorial Endowment Fund to provide funds for Rachel's Garden at the Cincinnati Zoo & Botanical Gardens and for scholarships at East Central High School to honor the memory of their daughter Rachel who was a passenger in a car accident that took her life in 2008.

Heather Strasemeier & Amber Probst for the establishment of the Michael Marine Memorial Scholarship Endowment Fund to provide support to South Dearborn Dollars for Scholars for the Michael Marine Memorial Scholarship in memory of Heather's brother and Amber's cousin Michael who died in a tragic accident in 2008.



Four individuals were inducted into the DCF Legacy Society at the annual Donor Appreciation Reception in 2010. Foundation Chairman John Maxwell presented the honor to Heather Strasemeier, right, and Amber Probst.

LEGACY SOCIETY MEMBERS

Jada & Greg Ankenbauer and Jane & Mike Noel through their establishment of the In The Interest of Children endowment fund.

Anonymous through the gift of appreciated stock for the establishment of the Clifford & Gladys Ellerbrook Ender Nursing Scholarship Fund.

Anonymous for establishing the Dan Kuebler Memorial Scholarship Fund.

Delores E. Baker through her gift to establish the Dr. Leslie M. Baker Memorial Scholarship Fund.

Charles and Wilma Beyer for the establishment of the Denise Ann Beyer Memorial Scholarship Fund.

James, Jr. & Carla Blair for establishing the Blair Family Fund.

The late Hartell F. Denmure & the late LaVerne R. Denmure (both posthumously) for the establishment of the LaVerne R. Denmure Fund.

The late Luella Dixon for the establishment and continued support of the Dixon -Andrews Endowment Fund.

Robert & Helen Dunavent through the gift of appreciated stock for the Community Grantmaking Fund during the GIFT V challenge from Lilly Endowment.

Lynn & Camille Eiler for establishing the Ross Eiler Memorial Scholarship Fund.

Wilma Firsich for the establishment of two charitable gift annuities with the remainder going to the Community Grantmaking Fund.

Fred & Jody Grawey for their contributions to the PFC Craig A. Keller Memorial Fund.

Ruth Gulley Gray through her gift to establish the Roger Gulley Music Scholarship Fund.

Mike & Loretta Heffelmire, Steve & Virginia Heffelmire and Larry & Marilyn Heffelmire for establishing the Heffelmire Family Fund.

Jerry & Stefanie Keller for the establishment of the PFC Craig A. Keller Memorial Fund.

Doug and Luree Ketcham for the establishment of the North Dearborn Pantry Endowment Fund.

Jeanne Lehn for the establishment of the Gerry Lehn Memorial Scholarship Fund.

The late Charles Lehner & Diana Lehner Miller for their gift of land to establish the Lehner Family Fund.

Deb Locke for her bequest in her will for the Community Grantmaking Fund.

The late Frank R. Longcamp (posthumously) for the establishment of the Frank R. Longcamp Scholarship Fund.

Barry & Fayla Nanz for establishing the Nanz Family Scholarship Fund.

Ron & Bonnie Powell for establishing the Powell Family Fund.

F. William and Stephanie Rahe for their gift to establish the Laura Busse Rahe Library Fund.

John & Patricia Rahe for their gift to establish the St. John Ev. Lutheran Church Fund.

Dellas and the late Dorothea Ross for the establishment of the Ross Foundation Fund.

The late Jim Rupel & Janet Rupel for their gift to establish the Rupel Family Unrestricted Fund.

The late Ronald Selmeyer for the establishment of the Ronald Selmeyer Scholarship Fund.

Dr. Jim Swanson for the establishment of the Dr. Jim Swanson Scholarship Fund.

Loren Shuter for the establishment of the Loren and Christine Shuter Family Fund.

Louise Walker for the establishment of the Telford and Louise Walker Fund.

Bill & Marjorie Zimmer for the establishment of the Chester and Ida Muntz Family Memorial Fund.

WOMEN EMPOWERING WOMEN CONTINUES MISSION AT 3rd ANNUAL BRUNCH

The Women Empowering Women (wEw) Program of the Dearborn Community Foundation (DCF) continued its successful mission to connect women who care with causes that matter in our community by awarding a total of \$2,000 in grants to three community organizations that make a difference for women of all ages in our community during its third annual brunch.

More than 120 women attended the April 2010 Brunch at Dearborn Country Club organized by a core group of women, who joined together, with the goal of empowering women of all ages in Dearborn County to become active, informed and responsible in their community. Another goal of the program is to improve the status of women of all ages in our community through support of programs that address critical needs.

Keynote speaker Kathy Smith-Andrews, educator and former Indiana Senator, as a survivor of domestic violence shared her story and her efforts to help victims of domestic violence through education, fundraising and legislation. Several young women from South Dearborn, East Central and Lawrenceburg high schools attended the brunch. Some of the students even created purses and hand painted flower pots that served as centerpieces during the event, fitting nicely with the Power of the Purse Brunch theme.

A primary goal of wEw is to improve the status of women of all ages in our community through support of programs that address critical needs. Attendees of the brunch did just that by voting at the event to award \$2,000 in grants among three community organizations that make a difference in the lives of women and girls in Dearborn County:

■ **Safe Passage, Inc., Batesville**, an organization that offers domestic violence intervention and prevention services including providing a domestic violence shelter for women and children and advocacy and education programs. Safe Passage which touches the lives of many women and children in our community, received a \$1,000 grant to support its services.

■ **Dearborn & Ohio County Child Abuse Prevention Council, Lawrenceburg**, an organization comprised of local volunteers that sponsors programs to raise community awareness of the effect on children when they are in abusive situations or victims of abuse, received a \$500 grant to support its programs.

■ **Directions!, Lawrenceburg**, a program of CMHC that provides age appropriate educational programs for school based and community awareness education for elementary through high



The Women Empowering Women (wEw) Program of DCF successfully continued its mission to connect women who care with causes that matter at its third annual Power of the Purse Brunch.

school age students that focus on sexual assault and domestic violence, received a \$500 grant to support its programs.

The three organizations that received wEw grants at the wEw brunch in 2009 had representatives at the 2010 brunch share with attendees their experiences as groups that make a difference in the lives of women of all ages in our community.

In addition, the first scholarship opportunity through wEw was announced at the brunch as part of the effort to empower women in

Dearborn County to improve their lives through education. The wEw scholarship is for the non-traditional female student who has not had the opportunity to attend college or complete their post-secondary education started previously in life. The 2010 recipient of the \$500 scholarship was April Fritch.

Jada Ankenbauer, a DCF board member and member of the wEw Advisory Council, said the event would not have been such a success without the hard work and dedication of the wEw Steering Committee, the DCF staff and the many community sponsors.

DCF TEAM



Fred McCarter



Denise Sedler



Cheryl Wessel



Andrea Nappier



Mark Neff



Lisa deHart Lehner

COURTEOUS PROFESSIONAL STAFF SERVES COMMUNITY WELL

The DCF Team is made up of staff, legal counsel, and community volunteers and board members that serve on the various Foundation committees.

The DCF Staff is a group of courteous, experienced professionals dedicated to making a difference in the community through top-notch service to donors, grantees, and other community members, as well as, by providing professional support to board members.

Executive Director Fred McCarter joined the DCF staff in early 2005, after a combined 19 years in newspaper journalism and media/marketing professions. McCarter also served on the Foundation's board of directors prior to joining the staff. McCarter's professional experience as well as his experience in community relations and governmental affairs serves him well as the Foundation continues in its constant efforts to grow the impact it has on the community through its philanthropic resources.

Program Director Denise Sedler joined the staff in late 2008. Sedler's significant experience in communications, marketing, administration and finance has proven to be very valuable in providing assistance to the many non-profit organizations and students in Dearborn County. As program director she manages the grant and scholarship programs.

Accountant Cheryl Wessel came to the Foundation in late 2007. Wessel brings to the Foundation 30 years of experience in the accounting field. Her work experience and volunteer activities provides the Foundation and Community with a very valuable asset for both non-profit accounting and tax.

Administrative Assistant Andrea Nappier joined the DCF staff in mid 2008. Nappier brings a wealth of professional experience to the Foundation with her background in administration, journalism, and marketing.

EcO15 (Economic Opportunities 2015) Coordinator Mark Neff joined the DCF staff in mid-2008. The EcO15 Coordinator is a temporary position funded by a grant from Lilly Endowment, Inc. As the EcO15 Coordinator, Neff is working with a nine-member task force and the Dearborn County school corporations to expand and improve education and training for advanced manufacturing, healthcare services, and hospitality and tourism in Dearborn County. Neff brings to the Foundation a wealth of experience with his 27 years of experience in the banking industry before retiring in 2004 and his involvement in the community through his many volunteer efforts.

Legal Counsel Lisa deHart Lehner with Wood Lamping & Lehner, LLP is one of the founders of DCF. Lehner is a significant asset to the Foundation through her expertise in tax planning, charitable giving, trust administration, probate administration, and estate planning as well as from her extensive knowledge of the Foundation.

BOARD MEMBERS, COMMUNITY VOLUNTEERS, FORM DCF COMMITTEES

In addition to Board Members, community volunteers also participate in the committee process of the Dearborn Community Foundation. Like the board, the participants represent a cross-section of the Dearborn County community.

2010 COMMITTEE MEMBERS

Board Development
Jada Ankenbauer*
Marie Dausch
Jim Deaton
Gerald Nixon*
Jim Stock*

DCF County Progress Grants & City of Lawrenceburg Community Grants Committee
Julia Dickey
Mike Hornbach

Leigh Kem
Becky Lyons
Gerald Nixon*
Dr. Matthew B. Probst*

Finance & Investment Committee

Dave Deddens*
Mike Heffelmire
Phil Meyer
Barry Nantz*
Ron Powell
Dr. Matthew B. Probst*
Brad Rupel
John Rumsey*
Perry Taylor*

Lilly Scholarship Committee

Jada Ankenbauer*
Jody Blasdel
Mary Fields*
Luree Ketcham*
Elaine Kroger

Community Scholarship Committee

Charlie Blankenship*
Margaret Stewart
Deamna Hacker*
David Kyle
Judy Ulrich*

Lawrenceburg Youth Grant Program Committee

Barb Branigan
Deron Denton
Mike Heffelmire
Holly Hinds
E.G. McLaughlin
Mike McLaughlin
Erin Wuestefeld

* Denotes 2010 Board member

REMEMBERING A SPECIAL FRIEND

In 2010, the Dearborn Community Foundation (DCF) lost a dear friend who played a significant role as a contributor to the future of the Foundation and its belief in the power of philanthropy. Luella Dixon passed away in February 2010 at the age of 102. She cared greatly about her community and believed in the Foundation's mission to make a difference in our community through charitable giving. In 2007, Luella established the Dixon-Andrews Fund, which provides operational support to the Dearborn Community Foundation. Luella was a member of DCF's Legacy Society, which is made up of a group of individuals who have made a dedicated effort to invest in endowment at the Foundation.



Luella Dixon

FINANCES

STATEMENT OF FINANCIAL POSITION

December 31, 2010 and 2009

ASSETS

	2010	2009
Cash and cash equivalents	\$ 700,400	\$ 766,692
Certificates of deposit	573,526	552,764
Investments	4,995,831	4,324,669
Property and equipment, net	100,193	117,338
Restricted cash	877,418	713,999
Restricted certificates of deposit	500,000	500,000
Restricted investments	<u>5,202,024</u>	<u>4,789,465</u>
	<u>\$ 12,949,392</u>	<u>\$ 11,764,927</u>

LIABILITIES AND NET ASSETS

Liabilities		
Accounts payable and accrued expenses	\$ 10,364	\$ 14,440
Deferred revenue	235,564	271,844
Charitable gift annuities payable	10,814	11,279
Custodial funds	<u>6,579,442</u>	<u>6,003,464</u>
Total liabilities	<u>6,836,184</u>	<u>6,301,027</u>
Net Assets		
Unrestricted net assets	1,008,291	1,017,461
Temporarily restricted net assets	<u>5,104,917</u>	<u>4,446,439</u>
Total net assets	<u>6,113,208</u>	<u>5,463,900</u>
	<u>\$ 12,949,392</u>	<u>\$ 11,764,927</u>

STATEMENT OF ACTIVITIES

For the Years Ended December 31, 2010 and 2009

	2010	2009
Support and Revenues		
Contributions	\$ 342,502	\$ 359,453
Grant revenue	224,845	414,015
Investment return, net	479,640	715,455
Other investment income	48,270	59,860
Administrative fees	187,865	184,315
Other revenue	<u>23,159</u>	<u>24,314</u>
Total support and revenues	<u>1,306,281</u>	<u>1,757,412</u>
Total Expenses		
Change in net assets	<u>656,973</u>	<u>842,307</u>
Change in net assets	649,308	915,105
Net Assets, Beginning of Year	<u>5,463,900</u>	<u>4,548,795</u>
Net Assets, End of Year	<u>\$ 6,113,208</u>	<u>\$ 5,463,900</u>

An independent audit for the years ended December 31, 2010 and 2009, was conducted by Blue & Co., LLC for the Dearborn Community Foundation, Inc. The complete audited financial statements can be reviewed at the Foundation office located at 322 Walnut Street, Lawrenceburg, IN 47025. The Dearborn Community Foundation, Inc.'s 2010 and 2009 Form 990 may also be reviewed at the Foundation office.



ECO15 INITIATIVE FOCUSES ON HUMAN DEVELOPMENT AS KEY TO ECONOMIC GROWTH, DEVELOPMENT

Creating a new culture where human development is seen as the key to economic growth and development is the goal of the Dearborn Community Foundation's EcO15 initiative in Dearborn County. As the regional EcO15 (Economic Opportunities Through Education by 2015) initiative moves through its third year in Dearborn County, more initiatives to spawn 21st century "Life-long Learning" environments have come to the forefront with more and more community partners stepping-up to the plate to take on the challenge to help mold a promising future for the citizens of Dearborn County and throughout all of Southeastern Indiana.

Each of the 10 counties that make up the EcO15 region created their own custom-made action plans to set and reach higher expectations for all levels of learners by "connecting the dots" among economic and educational opportunities, said Mark Neff, DCF's EcO15 Coordinator. Each county made the objectives of EcO15, the most important common bond: to help thousands of

residents in the region enhance their economic well-being and overall quality of life by creating an awareness of the constant need for life-long learning and developing a plan for career pathway for a viable workforce for the 21st century.

In Dearborn County, the largest impact of EcO15 initiatives has come in the K-12 educational structures. There is a movement toward becoming engaged in "project-based learning" curriculums. The most notable movement toward project-based learning has been the expansion of the Project Lead the Way (PLTW) programs. Enrollment growth has been spectacular since the high schools introduced their first class, Introduction to Engineering Design, in the fall of 2008. That first semester's enrollment was just slightly over 50 students. Now, with expansion of PLTW into the county's middle schools, including the three parochial schools, and the addition of up to four additional classes in each of the three county high schools, enrollment in PLTW classes countywide topped 1,500 students as of the spring semester of 2011.

To learn why the project-based learning dynamic has taken wings, ... just ask any student that has experienced the learning environment created within a PLTW lab, said Neff. ... It's also important to note that students, who successfully complete a high school level PLTW class in Dearborn County, receive dual credit. Those successful students receive both high school and college credits for the class. A student could potentially earn 21 college credit hours, if he or she had the ability in high school to take all seven qualifying PLTW courses. "This is a tremendous boost for an individual as they further pursue a post-secondary education or technical certification," said Neff. "This is what a culture of life-long learning and following a career pathway can do to transform the population of Dearborn County."

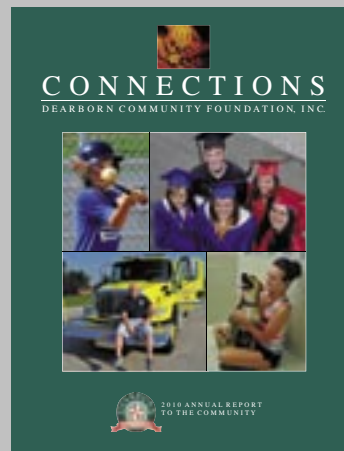
To learn more about what the EcO15 initiative has added to the human development of the people in Dearborn County and other parts of Southeastern Indiana, visit www.eco15.org and www.dearborncf.org.

HOW YOU CAN GET INVOLVED

There are many ways to get involved in the Dearborn Community Foundation's efforts to make a difference in Dearborn County.

- **Become Aware:** Learn more about how the Foundation helps donors achieve their charitable goals and the positive impact of the results.
- **Volunteer:** Offer to be a volunteer board or committee member. Volunteers also are needed at Foundation events.
- **Be A Donor:** Establish an endowment to support your favorite charitable organization or cause in perpetuity. ... Or contribute to an existing fund at DCF. We can help you make a difference for the charities or the issues you care most about.
- **Share Ideas:** Let the DCF staff and board members know about your ideas. Let us know what you think the charitable needs are in our community.
- **Be A Sponsor:** Individuals, organizations and businesses can provide sponsorship support or door-prize items for DCF's annual golf scramble to raise funds to support Foundation operations.

MISSION STATEMENT: The Dearborn Community Foundation, Inc. is a catalyst to connect people who care with causes that improve the quality of life in our community by advancing cultural, educational and social opportunities, while preserving our community's heritage and helping donors to create a permanent legacy in Dearborn County.



ON THE COVER: These photos truly show how the Dearborn Community Foundation helps make the "Connections" between those who contribute and those who benefit from their philanthropy.

DEARBORN COMMUNITY FOUNDATION
322 Walnut Street ■ Lawrenceburg, IN 47025
812 - 539 - 4115 ■ Fax 812 - 539 - 4119
www.dearborncf.org