



CONNECTIONS

DEARBORN COMMUNITY FOUNDATION, INC.



2016 ANNUAL REPORT
TO THE COMMUNITY

DCF BOARD OF DIRECTORS

2016 BOARD MEMBERS REPRESENT ALL CORNERS OF DEARBORN COUNTY

The Dearborn Community Foundation, Inc.'s (DCF) Board of Directors is made up of volunteers from all corners of Dearborn County, supporting the Foundation's primary purpose of building permanent endowment funds to serve donors who have charitable interests.

There were 16 members of the board during 2016. Directors are elected for three-year terms beginning with the annual meeting held in January of each year with approximately a third of the terms ending each

year. A director may serve a maximum of two full consecutive terms of service. The terms are staggered to provide continuity of experience.

Board members are elected by the board after it receives recommendations from the Board Development Committee which is charged with seeking talented leaders who are representative of the community.

The 2016 DCF Board of Directors and officers are pictured below.

EXECUTIVE COMMITTEE



Mike Hornbach
Chairperson
Jackson Township



Paula Bruner
President
Greendale



J David Wismann*
Treasurer
Aurora



Randy Tyler
Vice President
Aurora



Mary Ewbank*
Secretary
Hidden Valley Lake

BOARD OF DIRECTORS



Jada Ankenbauer
Aurora



Karen Blasdel
Miller Township



Loretta Day
Moore's Hill



Leigh Kem
Lawrenceburg



Bill Lakes
Aurora



Becky Lyons*
Lawrenceburg



Cherie Maddin
Aurora



Julie Murphy
Aurora



Gerald Nixon*
Bright



Kevin Schafer
Lawrenceburg



Bill Ward
St. Leon

THE FOLLOWING JOINED THE BOARD OF DIRECTORS IN 2017



Fayla Nanz
Lawrenceburg



Mark Neff
Aurora



Elise Smith
Aurora

FOUNDATION IS COMMUNITY'S LEADER IN BUILDING PHILANTHROPIC RESOURCES, ENCOURAGING COMMUNITY DEVELOPMENT

Dear Friends:

The Dearborn Community Foundation (DCF) is proud to be the community's leader in building the philanthropic resources that make Dearborn County a great place to live, learn, work and play. The Foundation's board of directors and staff are pleased to provide an Annual Report to the Community to illustrate the significant impact that the Foundation has made in the lives of folks who live in our community over the past 19 years. Of course, the Foundation's significant positive impact wouldn't be possible without the generous support of its donors and dedicated volunteers.

This Annual Report shares the impact on our community that the Foundation has had through its endowments held, the grants and scholarships awarded, and our volunteers' efforts over the past year. Not only with words and financial figures, but also with photos we tell the story of the Foundation during 2016.

By way of the Dearborn Community Foundation, donors are able to impact our community by supporting causes close to home and close to their heart. We take seriously the responsibility to be good stewards of those donors' contributions and to invest them wisely.

Through the generosity of our donors, the Foundation was able to award \$1.7 million in grants and scholarships in 2016 – making a difference in the lives of many people in our community by strengthening the work of many non-profits through grants and providing aid to students in their post-secondary educational efforts.

In 2016, the Foundation offered the "Double Your Donation" endowment matching campaign for the ninth straight year. As it was in the previous eight years, the matching campaign continued to be highly successful with all funds matched. Since 2008, the contributions made during the campaigns have increased the Foundation's endowment for the community by nearly \$3.6 million! Endowed assets during the nine year period have increased by nearly 50 percent. The campaign has inspired new philanthropy with 47 new endowment funds being started during the nine years supporting educational needs of students in our county and other organizations that make a positive impact on the lives of community members. In addition, contributions to existing endowment funds have helped to strengthen many non-profit organizations that serve needs in the community. The success of the campaign emphasizes that many generous supporters share the Foundation's belief in the power of philanthropy with investing in the future by building endowment.

The Foundation is deeply committed to its role in strengthening the community through strong leadership in bringing people together around common challenges and opportunities. We accomplish this through our partnerships with donors, volunteers and non-profit organizations. We look forward to the continuation of that impact as we embark on the milestone of our 20 year anniversary.

Our hope is that you will read this 2016 Annual Report to the Community and share it with family, friends and neighbors. We want you to share with others the exciting news of the Foundation's significant impact on our community and how we all can work together to increase Dearborn County's philanthropic resources



Paula Bruner
2016 Board President

A handwritten signature of Paula Bruner in black ink.



Fred McCarter
Executive Director

A handwritten signature of Fred McCarter in black ink.



DCF IS YOUR PARTNER IN PHILANTHROPY

The Dearborn Community Foundation, Inc. (DCF) offers its services to donors and professional advisors to help them fulfill their philanthropic wishes and maximize their benefits. DCF is committed to making your charitable giving a pleasurable experience. The Foundation can discuss various gift vehicles and help find the best gift methods to meet donors' charitable, financial and estate planning goals.

The Foundation with assets of \$18.3 million, administers 131 endowment funds. Each endowment fund is established by a separate agreement and is accounted for individually. The funds are designed to carry out the philanthropic dream of the founding contributors. The corpus of a fund is pooled with other funds for investment purposes. Distributions from the fund in the form of grants, scholarships, or payments to designated non-profit agencies are made each year.

Donors' wishes vary from the granting of scholarships in the name of a deceased loved one to designated and field of interest endowments that provide assistance to a particular non-profit organization or cause. By establishing an endowment, a donor can create a source of income for a fund's purpose in perpetuity.

For a description of the purpose of each endowment fund listed please visit our website at www.dearborncf.org and select the "Donors" tab and then click on "Existing Endowments."

Dearborn County Historical Society Fund
 Dearborn County Hospital Foundation Fund
 Dearborn County Parks Fund
 Dearborn County Quality of Life Improvement Fund
 Dearborn County Retired Teachers Educators Grant Fund
 Dearborn Highlands Arts Council Fund
 Deborah Meyers Guss Memorial Scholarship Fund
 Dillsboro Quality of Life Improvement Fund
 Dillsboro Fire Department Fund
 Dixon-Andrews Designated Endowment Fund
 Donald Miller Memorial Scholarship Fund
 Dr. Leslie M. and Dodie E. Baker Hillforest Fund
 Fields Family Fund
 Frances Deddens Memorial Fund
 Frank Frondorf Memorial Fund
 Heffelmire Family Fund
 Hillforest Historical Foundation Fund
 Historic Hoosier Hills RC&D, Inc. Fund
 Ivy Tech Lawrenceburg Campus Fund
 Ivy Tech Community College Scholarship Fund
 Jerry Tucker Memorial Scholarship Fund
 John F. PeGan Memorial Fund
 Kathi Green Memorial Scholarship Fund
 Laura Busse Rahe Library Fund
 Lawrenceburg Public Library Services & Resources Fund
 LaVerne Denmure Fund
 Loren & Christine Shuter Family Fund
 Main Street Aurora Fund
 Main Street Aurora Inc. Trail Fund
 Manchester Universalist Unitarian Church Fund 1
 Manchester Universalist Unitarian Church Fund 2
 Marvin and Sabra Duerstock Scholarship Fund
 Matt McIntosh Memorial Scholarship Fund
 Mindy McIntosh Memorial Scholarship Fund
 Michael R. Marine Memorial Scholarship Fund
 Moores Hill Alumni Scholarship Fund
 Moores Hill Parks & Recreation Fund
 New Horizons, Services & Support For The Mentally Handicapped Fund
 North Dearborn Pantry Fund
 Pete Parrott Fund
 PI Chapter of Kappa Kappa Kappa Inc. of Lawrenceburg Fund
 Pregnancy Care Center Fund
 Rachel Meece Memorial Fund
 RSVP Fund

DESIGNATED FUNDS

Alzheimers Support Groups of Southeast Indiana Fund
 Amy Cotton Memorial Scholarship Fund
 Anderson Academic Awards Fund
 The ARC of Dearborn County Fund
 Aurora Public Library District Fund
 Aurora Quality of Life Improvement Fund
 Aurora Tri-Kappa Fund
 Barrott Family Scholarship Fund
 Benner-Walsman Memorial Scholarship Fund
 Bill Lakes Dillsboro Elementary School Scholarship Fund
 Bright Lions Club Fund
 Bright Volunteer Fire Department Fund
 Brandon Cromer Memorial Scholarship Fund

Buck Crontz Boy Scouts of America Troop 637 Eagle Scout Fund
 Carnegie Hall Operating Fund
 Charlie Thayer Memorial Scholarship Fund
 Christopher Midlam Memorial Scholarship Fund
 Coach Dick Meador Lawrenceburg Football Scholarship Fund
 Collier Holtegel Memorial Scholarship Fund
 Community Mental Health Center Foundation Fund
 Community United Methodist Church Fund
 Daniel J. Gleason Memorial Fund
 Dave and Kay Chalk Education Scholarship Fund
 Dearborn Adult Center Fund
 Dearborn Community Foundation Operating Endowment Fund
 Dearborn County Convention, Visitors & Tourism Bureau Fund



Donors contribute to DCF for a range of charitable causes to award scholarships and grants, like a \$5,500 to the City of Aurora for a bike share program. Some donors establish endowments to support volunteer fire departments or emergency medical services.

Ross Foundation Fund
 Senior Services Development Fund
 South Dearborn Dollars For Scholars Good Knight Award Fund
 South Dearborn Education Foundation Fund
 South Dearborn It Pays To Stay Scholarship Fund
 South Dearborn Scholarship Foundation Fund
 St. John Evangelical Lutheran Church Fund
 Stock Family Fund
 Sunman Rural Fire Department Fund
 Telford & Louise Walker Fund
 United Way of Greater Cincinnati, Dearborn & Ohio Counties Fund

DONOR ADVISED FUNDS

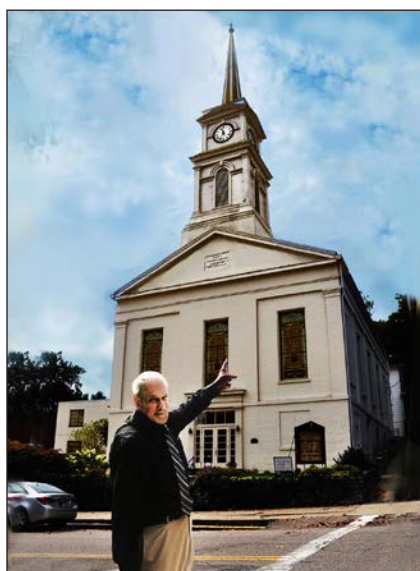
Blair Family Fund
 Community Health & Wellness Fund
 DCF Youth Council Fund
 Jack Carpenter Memorial Fund
 Lawrenceburg Youth Fund
 Lehner Family Fund
 Michael S. Davis Memorial Fund
 James & Darlene Phillips Family Fund
 Powell Family Fund
 PFC Craig A. Keller Memorial Fund
 Rupel Family Fund
 The Dearborn County Register Warm the Children Endowment Fund
 The Willis & Irene Chalk Memorial/Dixon Family Fund
 William K. Ewan Memorial Fund

FIELD OF INTEREST FUNDS

Chester & Ida Muntz Family Memorial Fund
 Sprint Educational Excellence Fund
 Women Empowering Women Fund

SCHOLARSHIP FUNDS

Adam Wilhelm Memorial Scholarship Fund
 Byron Hartman Memorial Scholarship Fund
 Clifford and Gladys Ellerbrook Ender Nursing Scholarship Fund
 Dan Kuebler Memorial Endowment Fund
 Dearborn County 4-H Scholarship Fund



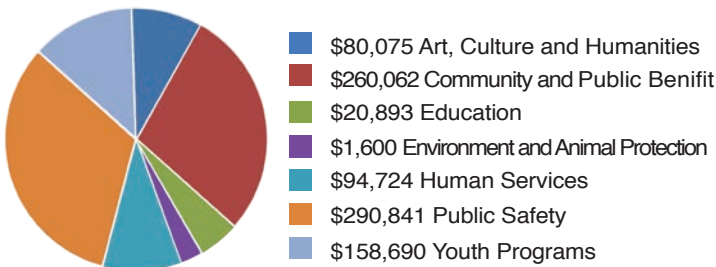
The City of Aurora established the Aurora Community Grant Program to make a difference in its community through grants, like a \$5,000 grant to the First Presbyterian Church to make repairs and refurbish its historic clock.

Denise Ann Beyer Memorial Scholarship Fund
 Dr. Jim Swanson Scholarship Fund
 Dr. Leslie M. Baker Memorial Scholarship Fund
 East Central Scholarship Fund
 The Frank R. Longcamp Scholarship Fund
 Fraternal Order of Police Scholarship Fund
 Gary Lyon Memorial Scholarship Fund
 Gerry Lehn Memorial Scholarship Fund
 Greg Andres North Dearborn Conservation Club Memorial Scholarship Fund.
 Jacob Amberger Memorial Scholarship Fund
 James Lohmiller Memorial Scholarship Fund
 Lawrenceburg Kiwanis Club Fund
 Lil & Docky Meyers Memorial Scholarship Fund
 Martha McKinney Newhouse Memorial Scholarship Fund
 Michael Cleary Memorial Scholarship Fund
 Nanz Family Scholarship Fund
 Paul E. "Truck" Tremain Memorial Scholarship Fund
 Perpetual Rotary Scholarship Fund
 Roger Gulley Memorial Scholarship Fund
 Ronald Selmeier Scholarship Fund
 Ross Eiler Memorial Scholarship Fund
 William Curtis Ewbank Memorial Scholarship Fund

UNRESTRICTED FUNDS

Community Grantmaking Fund
 Community Unrestricted Fund
 In The Interest of Children Unrestricted Fund
 Katie Bruner Community Fund
 Lauren Hill Make A Difference Fund
 Rupel Family Unrestricted Fund

2016 Discretionary and Donor Advised Grants



DCF AWARDS MORE THAN \$1.3 MILLION IN GRANTS DURING 2016

Dearborn Community Foundation (DCF) awarded more than 170 grants totaling more than \$1.3 million to non-profit organizations in 2016. The grants support the needs/interests of the community in the fields of: Art, Culture and Humanities, Community and Public Benefit, Education, Environment and Animal Protection, Human Services, Public Safety and Youth Programs.

The Foundation considers grants to be investments in our community. DCF grants benefit the community in a variety of ways. Projects range from a mobile library for the Lawrenceburg Public Library District and the support of the food pantries in Dearborn County to equipment upgrades and replacement for many of the local Fire/EMS departments and support of many community youth activities. These grants had a major impact on the lives of many people in our community.

The majority of Foundation funds awarded to non-profit organizations are discretionary grants for which DCF conducts a competitive review and decision-making process. These grants are administered by DCF through non-permanent grant programs. Generous contributions from both the City of Lawrenceburg and the City of Aurora provide the funding for the non-permanent grant programs. DCF's administration of the non-permanent programs helps both donors achieve their charitable goals. The remaining grants are awarded based on recommendations by donors and are paid out of endowment funds established by donors. Figures for total grants awarded in 2016 also include designated endowment fund distributions and grants administered by DCF for the Lawrenceburg School Endowment Corporation.

LAWRENCEBURG COMMUNITY GRANT PROGRAM

A total of \$717,709 in grants was awarded in 2016 to the following organizations:

35th Indiana Pipes and Drums Corp - \$23,435
Uniforms to be used for parades and other events throughout the community

American Legion Post #239 - \$4,000
Legion Hall lighting

Aurora Lions Club - \$30,000
Management of Aurora Farmer's Fair

Bright Volunteer Fire Company, Inc. - \$100,000
Electric self-load stretchers

City of Aurora - Fire Department - \$47,834
Extrication and vehicle stabilization equipment

City of Aurora - Park Board - \$5,500
Bike Share Program

City of Aurora - Police Department - \$34,372
Portable radios and shoulder microphones

City of Greendale - Police Department - \$7,610
Radar systems

Dearborn County 4-H Club Association - \$7,178
Youth Robotics Program

Dearborn County Clearinghouse for Emergency Aid, Inc. - \$5,000
Food for Christmas dinners for clients

Dearborn County Clearinghouse for Emergency Aid, Inc. - \$8,500

Freezer/cooler combination unit

Dearborn County Hospital - \$21,486
Athletic Trainer EMS/Rehab Equipment

Hamline Chapel United Methodist Church - \$3,844

Equipment for BSA Venturing Crew

Hillforest Historical Foundation - \$32,000
HVAC System Replacement

Laughery Valley Amateur Radio Club - \$4,277
Radio equipment

Lawrenceburg Main Street, Inc. - \$15,000
2016 Winter Wonderland

Lawrenceburg Public Library - \$100,000
Sprinter Van Mobile Library

LifeTime Resources, Inc. - \$5,000
Fuel cost for Catch-A-Ride program

Manchester Township Volunteer Fire & Rescue, Inc. - \$100,000
Upfitting Engine Unit 711

Moore's Hill Elementary School - \$2,000
Raps 360 Interventions (MindPlay Literacy)

North Dearborn Pantry, Inc. - \$68,425
Bulk food storage building

Sunman Dearborn Youth Athletic Association - \$8,249
Baseball & softball equipment

Town of Dillsboro - \$585
Dillsboro Heritage Celebration Projects

Union Valley Missionary Baptist Church - \$13,414
Roof replacement

Vineyard Community Church of Aurora - \$30,000
Roof replacement

We Care Packages, Inc. - \$40,000
Packages sent to military serving overseas

CITY OF LAWRENCEBURG YOUTH GRANT PROGRAM

A total of \$145,286 in grants was awarded in 2016 to the following organizations:

Aurora Lions Club - \$9,000

Holiday and Summer Activities for Youth

Aurora Little League Baseball - \$9,000
Uniforms and equipment

Child Evangelism Fellowship, Inc. - \$255
Snacks for the Good News Club at Central Elementary

Community United Methodist Church, Inc. - \$1,000
Food & hygiene items for the clients of the food pantry

Dearborn Community Foundation - \$1,000
Charitable works of DCF Youth Council

Dearborn County 4-H Club Association - \$9,000
Program supplies

Dearborn County Citizens Against Substance Abuse - \$7,000

Instructors and equipment for skate camp

Dearborn County Clearinghouse - \$1,000
Food & hygiene items for clients of the food pantry

Dearborn County Girls Softball Inc. - \$8,000
Equipment, insurance, umpire fees, and field maintenance

Dearborn County Social Council c/o RSVP - \$2,300
2016 Halloween Sensation

Dearborn Highlands Arts Council - \$1,079
Artist-in-Schools program

Dillsboro Community Food Pantry - \$1,000
Food and hygiene items for clients of the pantry

Dillsboro Summer Recreation, Inc. - \$9,000
Umpire fees and uniforms

East Central High School - \$3,000
2016 ECHS After-Prom

East Central Youth Wrestling - \$9,000
Competition wrestling mat

Ivy Tech Foundation - \$4,200
Fast Pass Advanced Manufacturing Summer Camp

Laughery Valley Fraternal Order of Police Lodge 146 - \$9,000

2016 FOP Cops and Kids Christmas Program

Lawrenceburg Babe Ruth Baseball - \$9,000
Uniforms, equipment and umpires

Lawrenceburg Greendale Soccer Club - \$9,000
Referee fees, participant fees and field maintenance

Lawrenceburg High School - \$3,000
2016 LHS After-Prom

Lawrenceburg Lions - \$9,000
Lawrenceburg youth baseball league costs

Lawrenceburg Pee Wee Football - \$9,000
Football equipment

Moore's Hill Food Pantry - \$1,000

Food & hygiene items for clients of the pantry

North Dearborn Pantry, Inc. - \$1,000

Food & hygiene items for clients of the pantry

South Dearborn Pee Wee Football - \$5,000

Safety equipment and footballs

Southeast Indiana Youth Orchestra, Inc. - \$3,452

Purchase beginner string instruments

St. Vincent de Paul - \$1,000

Food & hygiene items for clients of the food pantry

Warm the Children - \$5,000

Winter clothing and shoes for needy children

Warm the Children - \$4,000

Warm the Children Endowment Fund

Youth Encouragement Services, Inc. - \$2,000

Needs for the youth at the Y.E.S. home

CITY OF AURORA GRANT PROGRAM

A total of \$25,671 in grants was awarded in 2016 to the following organizations:

Child Evangelism Fellowship, Inc. - \$830

Snacks for Good News Club at Aurora Elementary

Dearborn County 4-H Club Association - \$3,653

Pen crates and security gating for storage and safety

Dearborn Highlands Arts Council - \$1,188

Concert in the Park

First Presbyterian Church - \$5,000

Repairs and refurbishment of historic Aurora City clock

Hillforest Historical Foundation - \$5,000

Exterior maintenance of Hillforest Museum

South Dearborn Dollars for Scholars - \$5,000

2016 SDDFS Challenge Scholarship Program

Special Olympics Indiana, Inc. - \$5,000

2016 Summer Games

DONOR ADVISED FUNDS, HEART OF GOLD, LAUREN HILL MAKE A DIFFERENCE FUND AND WOMEN EMPOWERING WOMEN (wEw)

A total of \$18,219 in grants was awarded in 2016 to the following organizations:

All Saints Academy - St. Paul Campus - \$506

James & Darlene Phillips Family Fund Donor Advised Grant for needs of the school

Aurora First United Methodist Church - \$300

Blair Family Fund Donor Advised Grant for needs of the church

Big Brothers Big Sisters of Greater Cincinnati - \$180

DCF Youth Council Fund Donor Advised Grant for games and equipment to support school mentoring programs

Children's Advocacy Center of Southeastern Indiana, Inc. - \$500

wEw Grant for program needs

Community Mental Health Center, Inc. - \$500

Heart of Gold Grant for Directions Program

Community United Methodist Church - \$525

Willis & Irene Chalk Memorial/Dixon Family Fund Donor Advised Grant for needs of the food pantry

Dearborn County Clearinghouse - \$2,000

Rupel Family Fund Donor Advised Grant for needs of the organization

Dearborn County Clearing House - \$1,000

DCF Youth Council Grant for toys purchased for Children's Christmas Toy program

God's Bright Treasures Ministry, Inc. - \$1,508

Michael S. Davis Memorial Fund Donor Advised Grant for Educare Program



Grants from DCF's City of Lawrenceburg Community Grant Program provided funds to help the Lawrenceburg Public Library purchase a new mobile library (Top) and bulk food storage building for the North Dearborn Pantry, Inc. (Bottom).

Manchester Township Volunteer Fire & Rescue, Inc. - \$500

PFC Craig A. Keller Fund Donor Advised Grant for needs of the organization

Manchester Township Volunteer Fire & Rescue, Inc. - \$525

Willis & Irene Chalk Memorial/Dixon Family Fund Donor Advised Grant for needs of the organization

Melodic Connections - \$2,000

Lauren Hill Make A Difference Fund Grant for supplies and equipment replacement from flood damage

North Dearborn Pantry, Inc. - \$1,000

Rupel Family Fund Donor Advised Grant for Pantry needs

PAWS Partners for Animal Welfare Society of Dearborn Co - \$1,600

DCF Youth Council Grant for program expenses and charitable works

PI Chapter of Kappa Kappa Kappa, Inc. - \$500

Heart of Gold Grant for Tri-Kappa Week Drug Awareness Event

Pregnancy Care Center - \$500

PFC Craig A. Keller Memorial Fund Donor Advised Grant for program needs of the organization

Pregnancy Care Center - \$1,000

wEw Grant for program needs and charitable works of the organization

Pregnancy Care Center - \$686

DCF Youth Council Grants for program needs

St. John Ev. Lutheran Church & School - \$500

Heart of Gold Grant for needs of School

St. Lawrence School - \$300

wEw Grant for Girls on the Run Program

Tri-State Eating Disorder Resource Team - \$500

Heart of Gold Grant for charitable needs of the organization

Warm the Children - \$1,289

Warm the Children Fund Donor Advised Grant for the Warm the Children Program

Youth Encouragement Services, Inc. - \$300

Blair Family Fund Donor Advised Grant for program needs

Dearborn Community Foundation Designated Endowment Funds distributed \$227,718 to the many charitable organizations in the community that they were established to support.

FOUNDATION AWARDS MORE THAN \$331,000 IN SCHOLARSHIPS AND EDUCATIONAL GRANTS

Through the generosity of donors, the Dearborn Community Foundation, Inc., (DCF) was able to encourage higher education and lower the cost of post-secondary schooling for many in Dearborn County by awarding 214 scholarships totaling approximately \$331,000 in 2016.

LILLY ENDOWMENT COMMUNITY SCHOLARSHIP

The purpose of the Lilly Endowment Community Scholarship Program is to help raise the level of educational attainment in Indiana and to leverage further the ability of Indiana's community foundations to enhance the quality of life of the state's residents.

Since the Lilly Endowment Community Scholarships were first offered in 1998, the Dearborn Community Foundation, Inc. (DCF) has been pleased to award the scholarships



Madeleine Feller

to Dearborn County students graduating from high school. In 2016, DCF was eligible to nominate a recipient and alternates for one full-tuition scholarship. The Lilly Endowment, Inc. program provides scholarships for full tuition, required fees, and a special allocation of up to \$900 per year for required books and equipment for four years of undergraduate study on a full-time basis, leading to a baccalaureate degree at any Indiana public or private college or university accredited by the North Central Association of Colleges and Schools.

The 2016 Lilly Endowment Community Scholar: **Madeleine Feller**, a graduate of Lawrenceburg High School, is currently attending De Pauw University. Madeleine is majoring in Theatre.

JACOB AMBERGER MEMORIAL SCHOLARSHIP

This scholarship was established in memory of Jacob Amberger, who was killed in an auto accident in October 2012. At the time, Jacob was a junior at East Central High School and was on his way to the school to play in the boys' soccer sectional final game. He was a third-year member of the ECHS Men's Soccer team and was one of the team captains. Jacob liked hanging out with his friends and being an Explorer with the Cheviot Police Department, as he was preparing to be a police officer. He will always be remembered for his warm hugs and big smiles. The recipient of the 2016 scholarship in the amount of \$500 was **Joseph Brush**.

GREG ANDRES MEMORIAL SCHOLARSHIP

The Greg Andres North Dearborn Conservation Club Memorial Scholarship was established in memory of Greg "Big Man" Andres who died in an accident on February 12, 2010. Greg was a man with a big heart who would do whatever was needed to help his community. This scholarship was created to honor his memory and to encourage students to follow his example of helping others. **Meghan Hay** and **Margo Whitehead** of East Central High School and **Cara Moore**, of Franklin County High School were each awarded a \$500 scholarship in 2016.

DR. LESLIE M. BAKER MEMORIAL SCHOLARSHIP

Dr. Leslie M. Baker provided financial help to students seeking a doctorate in medicine. Dr. Steven Gerke, who received financial support for his education from Dr. Baker, was surprised when later he learned that Dr. Baker helped a number of students in the same way. Dr. Gerke and the family of the late Dr. Baker were so moved by Dr. Baker's philanthropy that they established the memorial scholarship in his honor. The Scholarship provides financial support to residents of the Dearborn County Hospital Service area (Dearborn, Ohio, or Switzerland County) pursuing a doctorate in medicine with a preference given to Indiana University School of Medicine, Dr. Baker's alma mater. The 2016 recipient of the scholarship in the amount of \$1,000 was **Amanda Hornbach**.

DENISE ANN BEYER MEMORIAL SCHOLARSHIP

The intent of this scholarship is to provide financial assistance to a deserving South Dearborn High School student who has the academic foundation, sincere desire and motivation to complete a four-year college program. The recipient must be planning to pursue a degree in a math or science related field, including but not limited to: computers, engineering, economics, business, pharmacy, nursing or teaching science/math/computers. The 2016 recipient of the \$500 memorial scholarship was **Blake Mullalley**.

MICHAEL CLEARY MEMORIAL SCHOLARSHIP

This scholarship was started in memory of Michael Cleary, who was killed in an auto accident in January 2000. At the time, Mike was a freshman at East Central High School. He enjoyed being with his friends, football, hiking, camping, tearing things apart, and rebuilding them, but his greatest passion was snow skiing. Mike had a good heart and was always willing to help where there was a need. The recipient of the 2016 scholarship in the amount of \$500 was **Sarah Schuman**.

ROSSEILER MEMORIAL SCHOLARSHIP

This scholarship was started in memory of Ross Eiler, who was killed in an auto accident in April of 2001. Ross graduated from Lawrenceburg High School in 2000. While in school, he excelled in academics, sports, leadership and service commitment. Ross' family and the Lawrenceburg Schools Endowment Corporation wish to recognize the values that Ross exemplified through the establishment of this scholarship. The 2016 recipients of the \$1,000 scholarships were **Mallory Crosby** and **Sydney Lovins**.

CLIFFORD AND GLADYS ELLERBROOK ENDER NURSING SCHOLARSHIP

The purpose of this scholarship is to help ensure that the nursing care needs of the residents

DEARBORN COMMUNITY FOUNDATION SCHOLARSHIP



Connor Lynch



Sidney Todd



Madison Van Winkle



Allison Wells



Carlie Wilhelm

The Dearborn Community Foundation, Inc. recognizes the outstanding abilities of the Lilly Endowment Community Scholarship Program finalists. The Board of Directors has chosen to award \$1,000 to the finalists from each school corporation area. The scholarships are renewable for

up to four years providing the recipient maintains at least a cumulative 2.0 GPA. The 2016 finalists were:

Conner Lynch, East Central High School graduate

Sidney Todd, Lawrenceburg High School graduate

Madison Van Winkle, South Dearborn High School graduate

Allison Wells, South Dearborn High School graduate

Carlie Wilhelm, East Central High School graduate

of Dearborn and Ohio counties are satisfied. To accomplish this, people must be adequately educated and trained. This scholarship program is created to assist interested people in meeting the expenses required of that education and training and who meet specific eligibility criteria. In 2016, **Elbert Grubbs** and **Shelbie Yoe** were each awarded a scholarship in the amount of \$1,000.

WILLIAM CURTIS EWBANK MEMORIAL SCHOLARSHIP

The William Curtis Ewbank Memorial Scholarship was established by his son Thomas P. Ewbank in memory of the father he never met. William was killed in action in World War II, when his son was only seven months old. William a fifth-generation Ewbank resident of Dearborn County was born on April 5, 1913. He graduated from Lawrenceburg High School in 1931 and earned an A.B. degree in Economics at Indiana University in 1935. He also received a Second Lieutenant's rank from the R.O.T.C. at I.U., where he was awarded an Outstanding Cadet Medal. After two tours of duty, he studied for one year toward an M.B.A. at Harvard University. William was called back to active duty in October, 1942. He volunteered to rejoin his original company B, of the 11th Infantry, 5th Division, as a First Lieutenant, in February of 1944 and was killed in action on July 31, 1944 by sniper fire. William was known as a hard working student and very patriotic man, who loved his country! His son Thomas established this scholarship in

his father's memory and to honor a student who embodies the same qualities as William. The 2016 recipient of the \$5,000 scholarship was **Brittany Schwarz**.

ROGER GULLEY MEMORIAL SCHOLARSHIP

This scholarship was established in the memory of Roger Gulley, who was killed in an auto accident in 1962. Roger was only a sophomore at Aurora High School at the time of his tragic death. He was a very active young man with a fighting spirit. He was a good sport who believed in fair play. He was full of integrity, loyalty and faith. He loved life and having fun. This scholarship honors a South Dearborn High School student who shares Roger's attributes and most certainly his love for music. The 2016 recipient of the \$325 scholarship was **Olivia Bowers**.

BYRON HARTMAN MEMORIAL SCHOLARSHIP

This scholarship was established in memory of Byron Hartman, who was killed in an accident in July 2011 at the age of 24. At the time, Byron had just completed his first year of physical therapy school at Indiana University Purdue University Indianapolis (IUPUI). Anyone who ever met Byron knew that he was a special person. He was always one to assist someone in the classroom or spend more time on the practice field to help his team get better. Byron was kind and humble and could make

you laugh. At East Central High School, Byron was a three sport varsity letter winner and an Honors graduate. This scholarship is awarded to a student-athlete who demonstrates the same qualities that made Byron an excellent role model and friend. The 2016 scholarship in the amount of \$500 was awarded to **Meghan Hay**.

IVY TECH SCHOLARSHIP

The Dearborn Community Foundation has chosen to encourage Dearborn County residents to improve their level of educational attainment locally. Scholarships are awarded to continuing Ivy Tech State College students. In 2016, **Toby Day**, **Jenna Eckstein**, **David Gray**, **Jacob Lusby**, and **Cody Sullivan** were each awarded scholarships in the amount of \$800.

DAN KUEBLER MEMORIAL SCHOLARSHIP

This scholarship was established in memory of Dan Kuebler, a teacher, principal and superintendent, whose career as an educator spanned more than 30 years. Mr. Kuebler passed away in August 2007 after serving as a teacher, principal and, most recently, as Superintendent of Lawrenceburg Community School Corporation. As an educator and in his personal life Dan excelled as a leader and good citizen in his community. This scholarship was created to recognize a Lawrenceburg High School graduate with the same values Dan exemplified. The 2016 recipient of the \$500 scholarship was **Katie Sampson**.

LAUGHERY VALLEY FRATERNAL ORDER OF POLICE SCHOLARSHIP

The Laughery Valley F.O.P. Lodge #146 awards up to two separate scholarships to each of the following school districts (including home school students):

- Lawrenceburg (LHS),
- South Dearborn (SDHS),
- Sunman Dearborn (ECHS), AND
- Rising Sun (RSHS)

Scholarships are awarded to individuals planning to pursue a four-year baccalaureate degree at an accredited college or university and/or a two-year technical program certificate at an accredited institution. The 2016 recipients of the \$500 scholarships were, **Carissa Murdock of LHS, Amber Rox of LHS, Amber Secrest of SDHS, and Taylor Slayback of SDHS.**

LAWRENCEBURG KIWANIS CLUB SCHOLARSHIP

The Lawrenceburg Kiwanis Club was established as one of the first Kiwanis Clubs in the world on January 27, 1923. This club has been serving the community for more than 90 years. Kiwanis has a long history of commitment to improving the lives and welfare of children and young adults. The 2016 recipient of this \$500 scholarship was **Hannah Becker.**

GERRY LEHN MEMORIAL SCHOLARSHIP

This scholarship was established in 2008 to honor the memory of Gerry Lehn who died following a lung transplant in October 2007. Gerry was an avid fan of youth and high school athletics. With camera in hand, he was always present at Lawrenceburg High School athletic events in which his three sons were involved. Gerry always had a special place in his heart for athletes that regardless of ability played with all of their heart. This scholarship honors a student that demonstrates the attributes that brought Gerry the most joy. The 2016 recipient of this \$1,000 scholarship was **Tyler Gilmore.**

JAMES LOHMILLER MEMORIAL SCHOLARSHIP

This scholarship was established in 2010 in memory of James Lohmiller, who went by the name of "Jaymie". He died at the age of 20 in May 2009 by an accidental drug overdose. He graduated from Lawrenceburg High School in 2008. Jaymie enjoyed fishing, football, wrestling, and playing chess. He had a warm heart, a gentle soul, and was always willing to help others. The 2016 recipient of the \$500 scholarship was **Hannah Busha.**

FRANK R. LONGCAMP SCHOLARSHIP

The Frank R. Longcamp Scholarship was established with the Foundation in 2006 as part of a trust transferred from a local banking establishment. Mr. Longcamp wanted to leave a legacy following his death that would help deserving students fulfill their post-secondary educational goals. Three scholarships in the amount of \$800 each were awarded through DCF in 2016. The 2016 recipients were **Amber Rox of LHS, Mary Satchwill of SDHS, and Carlie Wilhelm of ECHS.**

MARTHA MCKINNEY NEWHOUSE MEMORIAL SCHOLARSHIP

The late Martha McKinney Newhouse, a lifelong resident of Lawrenceburg, received a degree in the field of nursing and also served many years as a "Pink Lady" at Dearborn County Hospital before her passing in 1995. Her son R. Daniel Newhouse established this scholarship to support students seeking a career in the nursing field in memory of his caring mother. The 2016 recipients of the \$1,000 scholarships were **Hannah Busha and Paige Weaver.**

LIL AND DOCKY MEYERS MEMORIAL SCHOLARSHIP

The Lil & Docky Meyers Memorial Scholarship was established by family and friends who wanted to memorialize Lil and Docky by leaving a legacy to annually help a deserving student from East Central, Lawrenceburg or South Dearborn high school fulfill their post-secondary educational goals. The 2016 recipient of the \$425 scholarship was **Sarah Schuman of ECHS.**

PERPETUAL ROTARY SCHOLARSHIP

For over fifty years, there was an active Rotary Club in Aurora. At the time that the club disbanded in 1999, it had its own Aurora Rotary Scholarship Foundation. The club membership voted to end its own foundation and turn the assets over to the Dearborn Community Foundation. Because of this, the Rotary is able to keep a presence in the community and continue to help with scholarship funds for South Dearborn High School students. The 2016 recipients of the \$500 scholarships were **Mary Satchwill and Amber Secrest.**

RONALD SELMEYER SCHOLARSHIP

Ronald Selmeyer, a former Greendale City Councilman, was nominated and awarded the 1999 Hometown Leadership Award through the Wal-Mart Foundation. With this award from Wal-Mart, Mr. Selmeyer established the Ronald Selmeyer Scholarship. Mr. Selmeyer passed away in 2007, but his legacy of leadership continues through this scholarship. The 2016 recipient of the \$500

scholarship was **Hannah Busha.**

PAUL E. "TRUCK" TREMAIN MEMORIAL SCHOLARSHIP

It is the City of Lawrenceburg's intent through the Paul E. "Truck" Tremain Memorial Scholarship (formerly the Lawrenceburg Educational Grant Program) to financially assist eligible graduates of Lawrenceburg High School who pursue a post-secondary education which includes, but is not necessarily limited to, any 4-year school, 2-year school, 1-year certificate program or apprenticeship program. The program began with the Class of 2002, is administered by DCF with funding from generous contributions made by the City of Lawrenceburg. Students give back to the community through volunteer service during their high school years as part of the eligibility requirements. Some of the organizations that students have volunteered for include Big Brothers/Big Sisters of Dearborn Co., PAWS, and Special Olympics. Educational funds are renewable for up to four years as long as the student continues to meet all established eligibility criteria. Scholarships for the year 2016 were \$1,800 per recipient. A total of 158 students received this scholarship for the 2016/2017 school year totaling \$284,400 in scholarships awarded.

ADAM WILHELM MEMORIAL SCHOLARSHIP

The scholarship was established in memory of Adam Wilhelm by his teammates, friends and loved ones. Adam passed away tragically in March 2011 due to a sudden illness during his final year at Purdue University. Anyone who crossed paths with Adam was truly blessed to know an energetic, fun, smart and loving young man. He wanted the best for his friends, soccer teammates and those around him. Adam would do anything for someone he loved and didn't need anyone's approval to be himself. The 2016 recipient of the \$300 scholarship was **Joseph Brush.**

WOMEN EMPOWERING WOMEN (wEw) SCHOLARSHIP

Women Empowering Women (wEw) is a Dearborn County initiative of women joining together to empower women to become active, informed, and responsible members of their community. The scholarship was established in 2010 as part of the effort to empower women in Dearborn County to improve their lives through education. The scholarship is for the non-traditional female student who has not had the opportunity to attend college or complete their post-secondary education started previously in life. The 2016 recipient of the \$500 scholarship was **Jenna Eckstein.**

FOUNDATION HONORS VOLUNTEERS WITH 'HEARTS OF GOLD'

The Dearborn Community Foundation honored four community volunteers for having "Hearts of Gold" in 2016. The Heart of Gold recipients were recognized for touching the hearts of others through their volunteerism and other acts of kindness.

"Each honoree deserves this recognition for making a difference in our community in their own unique ways," said Fred McCarter, DCF Executive Director. "They are all role models for how all of us can make a difference in our community."

During the Heart of Gold reception, each of the four honorees nominated by others in the community and then chosen as Heart of Gold recipients by a Foundation Committee received the coveted Heart of Gold award. The honorees were also given the privilege of serving on the Heart of Gold Committee to further touch the hearts of others by awarding \$2,000 in proactive grants to non-profit organizations that serve Dearborn County.

In recent years, Heart of Gold recipients have been recognized for helping senior citizens or disadvantaged persons, working to improve the quality of education, expanding recreational or cultural opportunities, working with children, protecting the environment, promoting public safety, raising public awareness of issues that affect all ages, and other acts of kindness.



The Foundation honored community volunteers (from left to right) Andrea Shuter, Roberta Schuster, Carolyn Stroup, and Lara Komon.

DCF HEART OF GOLD RECIPIENTS AWARD GRANTS

The Heart of Gold Grants Committee Awarded a total of \$2,000 in grants to community organizations.

Community Mental Health Center – for the Directions Program.

PI Chapter of Kappa Kappa Kappa, Inc. – for Tri-Kappa Week Drug Awareness Event in February 2017.

St. John Ev. Lutheran Church & School – for needs of the school.

Tri-State Eating Disorder Resource Team – for charitable needs of the organization

HEARTS OF GOLD HONOREES

Lara Komon, Lawrenceburg: Lara's email signature, a quote from Karma R. Springfield, best summarizes why she was nominated for the Heart of Gold Award: "So every little bit of love I give to another, you know I believe it comes back to me." Lara's nominator first met her when she registered to participate in a National Eating Disorder Association (NEDA) Walk in 2011, and volunteered to help in any way. Her smile and open-hearted kindness was obvious the first time they met. She has helped develop, support and has donated many hours to the Tri-State Eating Disorder Resource Team, a volunteer organization. Lara started a free and confidential support group in 2012 that continues today. She is dedicated to improving the community in which she lives and encourages others to become involved in volunteer work. One of Lara's passions is helping our youth. She has opened her home and heart by becoming a foster parent. She is a difference-maker in Dearborn County and lives are better for knowing her.

Roberta Schuster, Lawrenceburg: Roberta is a Rape Crisis Support & Advocacy Volunteer Advocate for the DIRECTIONS! Program of Community Mental Health Center, Inc. She joined the crisis team in 1987 and she participated in extensive training preparing her for her role as a Victim Advocate. She has provided hospital accompaniment for victims, legal and court advocacy, and spent numerous hours sitting in courtrooms supporting survivors. During her years on the crisis team, Roberta

helped survivors navigate the murky waters of evidence collection, law enforcement interviews, and court proceedings. She held their hands, answered their questions, and reminded them of their value and worth. To many, she was their lifeline during the acute phase of their trauma. Now, some 30 years later, Roberta still takes hotline shifts, goes to the hospital with victims, and sits quietly in courtrooms. She is resourceful, generous, committed, and works diligently to be sure all victims/survivors of rape and sexual assault are treated with dignity and respect. Her years, of selfless service and experience span 30 years. She truly has a heart of gold.

Andrea Shuter, Aurora: Andrea is a busy lady, on top of being a mother of three and working a full-time job, Andrea has recently joined the Aurora Life Squad as a volunteer and started the EMT class. She also volunteers at St. John's Lutheran School in Aurora, where her children attend school and where they are members of the congregation. At church, she volunteers for the Farmer's Fair food booth. She previously managed the Market Day program, and is the current treasurer for the St. John's PTL. She believes involvement with your children is essential to their well-being. She volunteers her time with the Aurora Little League, her daughter's SAY Soccer Team and at the Hogan Township Fire Department, where her husband is assistant chief. Andrea has also volunteered at events held by Mt. Si-

nai United Methodist Church, and is willing to lend a helping hand whenever she is asked. All of these attributes represent someone who puts others before herself, and has an open and beautiful heart. What makes Andrea so special is that she does everything without asking for recognition, accolades, or acknowledgement.

Carolyn Stroup, Lawrenceburg: Her nominator cannot remember a time when Carolyn wasn't doing things to help others from young to elderly and everyone in-between. Her nominator first met Carolyn nearly 40 years ago while helping with vacation Bible school. She taught a class, baked the cookies and provided transportation for kids who had none. As a Girl Scouts volunteer, she always set a fine example for the girls of what an exemplary Girl Scout should be. Carolyn would say, "Always leave things better than you found them." She is a member of the Lawrenceburg Tri Kappa, she has volunteered for many events. As part of Tri Kappa, when shopping for Christmas presents for the group home residents and the budgeted amount was reached, Carolyn eagerly paid the balance with no hesitation. She wanted to make sure the residents had the items that would bring smiles to their faces. She is always thinking of others. She does all these things while working a full-time job as a registrar at Dearborn County Hospital. She is a very active member of St. John's Lutheran Church at Bellaire. Helping others is a passion for Carolyn.

POWELL FAMILY GIVES BACK TO COMMUNITY THROUGH ENDOWMENT FUND

Donors often establish endowment funds for many different reasons, ranging from honoring or memorializing a family member or friend, to simply supporting a charitable organization or cause in the community. This is a story of a family giving back to its community through a donor-advised fund.

Ron and Bonnie Powell made a living in Dearborn County and Southwest Ohio for more than 23 years with their former company Powell Gravel & Topsoil. So when they established the Powell Family Fund in late 2005 at the Dearborn Community Foundation (DCF), they did so to give back to the community they love.

"We wanted to give back to the community by supporting things that are important to our family," Bonnie said. "Our hopes are that our children will step in and advise the foundation on grants someday when we're no longer around."

Through the donor-advised endowment fund at DCF, the Powell's are able to periodically recommend grants to eligible charitable entities and causes in their community. They simply make a written recommendation to the DCF staff to complete due-diligence work and then the recommendation goes on to the Foundation board of directors for approval.

Ron, a former DCF Board member, said they chose a donor-advised fund so they could have direct input into what organizations and causes receive grants from their endowment fund. "We like being able to choose what organizations receive funding," he said.

An example of the types of grants the Powell Family Fund has awarded recently are more than \$8,000 in grants to the Sunman Rural Fire Department, which provides fire service to a significant portion of Northern Dearborn County. The grants to the fire department have helped purchase needed equipment and most recently in early 2017 a Powell Family Fund grant helped purchase new tires for one of the fire department's fire and emergency trucks.

"We're passionate about what firefighters do," Ron said. "We have a direct connection. Both of our fathers retired from the Cincinnati Fire Department, and our son Ronnie is a 10-year volunteer firefighter for Sunman Rural Fire Department."

The Powell's have great respect for the dedication of volunteer firefighters. "Our fathers were full-time firefighters who got paid for it," Ron said. "With our son being a 10-year



Bonnie and Ron Powell are giving back to the community through a donor-advised endowment at DCF.

volunteer, we are certainly more aware of the personal sacrifice. What would we do without these folks? They need support to make sure they have what they need when their services are needed."

Prior to establishing the Powell Family Fund at DCF, the Powell's did their giving directly on their own. However, they say utilizing the donor-advised fund at DCF has great benefits.

"It's been a very good experience," Ron said. "It's very convenient to us to have the endowment because the Foundation takes care of all of the accounting and bookwork and all administration. We like the donor-advised fund because we can have input and we don't have to do all of the administrative work."

The Powell's also recommend others consider establishing an endowment at DCF, as the Foundation is a valuable tool in the community to help donors make a difference in the community by supporting their favorite charities and causes. "It's a great feeling to be able to give back and make a difference," Bonnie said.

For the Powell's, giving back to their community is important. They, however, are giving back to the community in more than one way. They are setting a wonderful example of philanthropy for their three grown children (Ashley Kranz, Elizabeth Rosenberger, and Ronnie), their six grandchildren and the community as a whole.

DCF YOUTH COUNCIL HELPING OTHERS



The 2016-2017 DCF Youth Council presents a \$1,600 check to P.A.W.S. of Dearborn County Humane Center in 2016.

The DCF Youth Council again made a difference in Dearborn County in 2016, as the high-school age youth (grades 9-12) completed significant community service hours and raised funds to grow its DCF Youth Council Endowment Fund, which supports other worthy causes in the community.

The Youth Council, which is made up of youth from across Dearborn County, was established by DCF in 2012 to involve youth in a meaningful way in the philanthropic tradition, to encourage young people to give and serve in their community, and to make philanthropy a habit of the heart for future generations. The Council is self-sufficient and youth-run with DCF staff and volunteers giving guidance and direction where needed. The Council is guided by the three ideals of giving and serving, leadership development, and community engagement.

Council members are nominated by individuals in the community and from recommendations by current Youth Council members. Council members exhibit qualities of energetic, caring and involved youth who want to better serve their community. It's important to note that young people in the community don't have to serve on the council to get involved in council activities.

Youth Council members are learning the value of philanthropy and that setting aside funds for the needs of future generations through endowment is vital. The DCF Youth Council Endowment Fund, which was established in 2012, has grown significantly through the hard work of the youth, volunteer coordinators Denise Sedler and Cherie Mad-din, and Foundation staff. The endowment fund provides support for various needs in the community through grants recommended by the Youth Council. The DCF Youth Council Endowment Fund has grown to a value of more than \$16,000. Youth Council members have input as to what they see are the needs from year to year through their grant recommendations from the fund.

In 2016, the Council presented a \$180 grant from the DCF Youth Council Endowment Fund to Big Brothers Big Sisters of Cincinnati for Dearborn County.

Since the first Youth Council 5K Run/Walk in 2013, the Council has raised a total of more than \$17,000, which includes the funds raised at four 5Ks and other smaller fundraisers. Through the fundraisers, the Youth Council has added to the endowment and also provided support to worthy causes such as local food pantries, Pregnancy Care Center, and P.A.W.S. of

Dearborn County Humane Center. The Council raised a total of more than \$3,500 for six local food pantries the first two years of the 5K. The Council raised nearly \$1,700 for the Lauren Hill Make A Difference Fund at DCF in 2015. In 2016, the Council split the \$3,215 in 5K proceeds 50-50 between the P.A.W.S. of Dearborn County Humane Center and the DCF Youth Council Fund. A total of \$2,333 was raised at the 5K in 2017 with half of those funds being contributed to the Special Olympics Indiana Ripley Ohio Counties.

Youth Council members also participate in community service projects, including volunteering time by shopping for needy families served by the Dearborn County Clearing House for Emergency Aid and sorting donations for the Children's Coalition for Christmas Toys. The Council has also volunteers to help the We Care Packages, Inc. with its mission to send care packages and cards to U.S. soldiers.

2016-2017 Youth Council members are: Nathan Folop, Molly Graham, Stephanie Gray, Bryssa Helton, Claire Hollingsworth, Star Isaacs, Shelby Lake, McKenna Lorton, Moira Metz, Hannah Morgan, Luke Ruter, Jess Schwarz, Tyler Schwarz, Justine Stenger, Isabella Sterchi, Lauren Weissmann, Leah Wright, and Sydney Yoe.

2016 CONTRIBUTORS

Thank you to our many contributors who share the Foundation's belief in the power of philanthropy with investing in the future by building endowment. Our support does not come from just one individual, one family or one company but from many contributors from the community as well as those outside of the community that still have connections to Dearborn County. Without our generous donors DCF would not be able to have the positive impact on the lives of so many in our community.

5 Way Chili, LLC
AEP Lawrenceburg
American Structurepoint
Jada & Greg Ankenbauer
Antoinette Andres
Elizabeth Armbruster
Aurora Community Center
Aurora Lions Club
Back to Health Chiropractic
Cathy Backman
Janet Baer
The Hon. Judge John G. Baker
Elizabeth Baumgartner
Beacon News
Dorothy Behrens
Bill's Shoe Repair
James R. Blair, Jr.
Jody & Karen Blasdel
Pete Blievernicht
Blue & Co., LLC
Kenneth & Andrea Bowman
Charles Brandel
Bright Veterinary Clinic
Keri and David Brown
Carrie Bruce
Mark & Paula Bruner
Byron Hartman Scholarship Fund
Lori & Shawn Cantrell
C-Cubed Catering and Events LLC
Theresa Canfield
Central Elementary School
Chipotle Mexican Grill
Cincinnati Reds
Cincinnati Zoo and Botanical Gardens
City of Aurora
City of Aurora - Fire Department
City of Lawrenceburg
Frank and Connie Cleary
Pennie Colen
Comb's Pizza
Community Mental Health Center, Inc.
Blake Coors
Jeffrey & Jennifer Cotton
Kenny & Verna Cotton
Dairy Queen - Aurora
Loretta Day
Dearborn County 4-H Club Association
Dearborn County Chamber of Commerce
Dearborn County Citizens Against
Substance Abuse
Dearborn County Convention, Visitor &
Tourism Bureau
Dearborn County Hospital
Dearborn County Retired Teachers
Foundation, Inc.
Dave Deddens
Gerhard Deddens
Martin DeJulia
Pat Denier
Denmure Law Office
DeVillle Pharmacies, Inc.
Thomas Devoll
Robin & Timothy Dickhaus
Jeremy Dilts
Michael & Tina Dimeglio
Mark and Jeanette Dole
Sabra Duerstock
Goldie Dunaway
Christopher Dyer
Eagle Radio
East Central Boys Soccer Association

East Central High School
Michael J. Elam
Dennis & Ann Elder
Stephen Eliason
Enhanced Telecommunications Corp.
Estate of Marjorie M Zimmer
Andrea Ewan
Naomi Ewan
Thomas Peters Ewbank
Tarry Feiss
Angela Feller
Mary Fields
Fields IGA Dillsboro
Robert A. & Elizabeth A. Fischer
Fraternal Order of Police
Friendship State Bank
Amelia Fuller
Fund Evaluation Group, LLC
Jamie Gaynor
Patricia Gerke
Greendale Middle School
Gregory & Julie Gray
Stephen Gray
Melinda Grenat
Debora Grossman
Jean Grubbs
Haag Ford Sales
Mr. & Mrs. Jonathan Hale
Harmeyer's Market
Peggy Hartlaub
Patti Hays
T. Steven Hedges
Hidden Valley Golf Club
Darrell & Jennifer Hildebrand
John & Catherine Hill
Hillforest Historical Foundation
Hiltz-Nobbe
Lawrence & Sandy Hoff
Hoffman Catering
Michael Hollenbeck
Hollywood Casino
Home Furniture
Mike Hornbach
Huff Realty Indiana
Independent Colleges of Indiana
Indianapolis Colts
Krista Inman
Chris & Jami Isaacs
Theodore & Lynn Johnson
Jerry & Stefanie Keller
Kelsey Chevrolet
Douglas & Luree Ketcham
Lynn and Gary Krebs
Bill & Connie Lakes
Lawrenceburg High School
Lawrenceburg Kiwanis Club, Inc.
Lawrenceburg Lions Club
Lawrenceburg Primary School
Lawrenceburg Schools Endowment Corp.
Lawrenceburg Speedway
Jeanne Lehn
Jonathan & Suzan Lehn
Steven & Nancy Lillie
William Lind
Lisa D. Lehner-Lovelace
LifeTime Resources, Inc.
Becky Lyons
James MacDonald
Robin MacDonald
Elizabeth Manford
Michael & Traci Manford
Steve & Sue Manford
Maxwell Construction
Kenneth McAllister
Ella McAndrew
Dr. Mark & Sharon McAndrew
E.G. McLaughlin
Curtis & Beverly McQueen
Stacy & Angela Meyer
James & Carolyn Meyers
Jeffery & Meghan Meyers
Jerry & Margaret Miser
Dale Moeller
Elizabeth Morris
Londalea Murray

E. Alan Newhouse
Newport Aquarium
Thomas & Holly Nichols
Gerald & Dorothy Nixon
North Dearborn Pantry, Inc.
Kerrie Ohlmansiek
Sheri Osterman
Oyler Family Dentistry
Parlour of Aurora
Performance Machining
Shannon Perry
Carl Petty
Steve Poehner
Ron and Bonnie Powell
Proximo Distillers LLC
Lowell & Kathy Ransom
Rising Star Casino Resort
Joelee & Gregory Ritzi
Roger Lake Trucking, Inc.
Ron's Roof Stain Removal LLC
RPM Productions, Inc.
William G. & Norma Rudicil
Douglas Ruter, DDS
Joseph Sanchez
Mary Schafer
Gary & Linda Schneider
Robert & Laura Schuette
Schuman Flooring LLC
Leslie Seymour
Shoe Sensation
David Smith
Deborah A. Smith
James & Marla Smith
Michael & Cheryl Smith
South Dearborn Dollars For Scholars
St. Elizabeth Healthcare
St. Leon Properties LLC
St. Leon Tavern
St. Leon Volunteer Fire Department, Inc.
State Farm Insurance
Stedman Machine Company
Russell Steinmetz
Greg Stenger
John & Linda Stenger
Michael Stonecipher
Subway - Aurora
Sunman Rural Fire Department, Inc.
Dr. Jim Swanson
Sycamore Gas Company
Trade and Industrial Supply
Robert & Lois Tucker
Randy & Jan Tyler
UCB Charitable Foundation
Nick & Judy Ullrich
United Way of Greater Cincinnati,
Dearborn & Ohio Counties
US Bank
Val's Vinnings Barber LLC
David & Marlene Vogelsang
Votaw & Schwarz
Marjorie Waldon
Wal-Mart Super Center
Walt's Welding
Marilyn Warnford
Robert Weissmann
Ken & Loraine Werner
John & Cheryl Wessel
Greg & Angela Whitaker
Tom Widener
Wilhelm-Waggoner & Bundy, LLC
James & Julie Wilhelm
Scott Wilson D.D.S.
Working Environments, Inc.
Kristen Wright
Pat Wright
Marc & Marilyn Yoe
Debbie Zimmer

MEMORIAL CONTRIBUTIONS
In Memory of Greg Andres
William R. Barrett
In Memory of Katie Bruner
John H. & Lois Cole, Jr.
Mark & Paula Bruner
In Memory of Ross Eiler
Ashley Eiler and James Dowd

In Memory of Gladys Ender
Geraldine Stutz
In Memory of Kendra Fischer
Robert A. & Elizabeth A. Fischer
In Memory of Mary Ann Fuchs
Debbie Zimmer
In Memory of Hank Nanz
Tim & Barbara Albright
Daniel & Colleen Aug
Mark & Debbie Bush
John & Darlene Connolly
Debbie & Roger Fehling
Mary Fields
Stephen & Natalie Fowler
Jerry & Dee Hacker
David & Judy Hizer
William & Patricia Krider
Mike McLaughlin
Gary & Jane Miller
Gerald & Dorothy Nixon
Steve & Connie Sandbrink
Kevin & Meghan Schafer
In Memory of Wally O.
Debbie Zimmer
In Memory of John F. PeGan
Carl & Susan Jaeger
In Memory of Carroll & Doris Walker
Lee & Melinda Edgerton
In Memory of Telford Walker
Lee & Melinda Edgerton
In Memory of Phil Weaver
Russell & Elizabeth Beiersdorfer
The Dearborn Community Foundation
made memorial endowment contribu-
tions for the following individuals:
Darryl Gulley
Deloris Karp
Marlene Mollau
Linda Taylor
Rita Wessel
Darlene Phillips made memorial contribu-
tions for the following individuals:
Mary Ann Fuchs
Barb Head
Gerard Hughes
Jerome Martini
Gary Steinmetz
Doris Stutz
Roy & Agnes Trossman

CONTRIBUTIONS HONORING
INDIVIDUALS
In Honor of Jada Ankenbauer
Fred McCarter
Mike & Jane Noel
In Honor of Jada Ankenbauer's Birthday
Mike & Jane Noel
In Honor of Elizabeth Cleary's 90th Birthday
Frank & Connie Cleary
In Honor of Tony Moore
Fred McCarter
In Honor of the Birth of Dawson Schafer
Dearborn Community Foundation
Jada Ankenbauer made contributions on
honor of the following individuals:
Steve Cotherman & Paula Gilbert
Dave & Judy Hizer
Bill & Connie Lakes
Nick & Judy Ullrich
Jane Noel's Birthday
Jeremy Dilts made contributions
in honor of the following individuals:
Angela M. Dilts and Harper Loewe
Charmaine Jodie Gleason
Judy Guss
Marlyn Guss
Marlyn and Renee Guss
Jennifer and Charles Jackson
Jeff & Meghan Meyers
Jim & Carolyn Meyers
Mary Meyers
Sharen Meyers
Suzette and Donald Meyers
Blanche & Thom Schmidt

LEGACY SOCIETY MEMBERS

DCF LEGACY SOCIETY HONOREES

The Dearborn Community Foundation's Legacy Society is a group of individuals, organizations and other entities who have made a dedicated effort to invest in our community through endowment at the Foundation. These honorees live in Dearborn County or have strong ties to our community.

DCF added six new members to the Legacy Society in 2016, bringing the total number of honorees to 107. Legacy Society members have contributed a significant charitable endowment at DCF to support charitable needs in our community. Some have established scholarship funds, while others have established donor-advised funds so that they can select a different charity to support with income from the endowment each year. Some select a specific charity to receive income from the endowment each year.

Legacy Society members have chosen to make a difference in our community today, knowing that their gifts will continue to give tomorrow and forever into the future.

2016 Honorees

Gerhard Deddens and David Deddens – for the establishment of the Francis Deddens Memorial Fund providing funds to All Saints Catholic Academy.



DCF Chairperson Mike Hornbach, left, and President Paula Bruner, center right, present a Legacy Society inductee plaque to Gerhard Deddens and David Deddens.

Sabra Duerstock – for the establishment of the Marvin and Sabra Duerstock Scholarship Fund providing support to South Dearborn Dollars for Scholars.

Andrea Ewan and Naomi Ewan - for the establishment of the William K. Ewan Memorial

Fund providing funds to award grants to worthy charitable organizations in our community.

Mary Fields – for the establishment of the Fields Family Memorial Fund providing support to the Ross Foundation, Inc.

LEGACY SOCIETY MEMBERS

Alzheimer's Support Groups of Southeast Indiana, Inc.

Jada & Greg Ankenbauer

Anonymous

Anonymous

Delores E. Baker

James, Jr. & Carla Blair

The late Charles and Wilma Beyer

Keri Brown

Paula and Mark Bruner

Carnegie Hall Historic Landmarks

Preservation Society, Inc.

Allan Carpenter

Kenny & Verna Cotton

Carol Davis

Dearborn County Retired Teachers

Foundation, Inc.

David Deddens

Gerhard Deddens

The late Hartell F. Denmure & the

late LaVerne R. Denmure (both

posthumously)

Jeremy Dilts

The late Luella Dixon

Melody Dixon

Sabra Duerstock

The late Robert Dunavent & Helen Dunavent

East Central High School Community

Lynn & Camille Eiler

Andrea Ewan

Naomi Ewan

Thomas Peters Ewbank

Victor Fay

Mary Fields

The late Wilma Firsich

Beth Fox

Patricia Frondorf

Stephanie Frondorf

Jeff Graf

Fred & Jody Grawey

Ruth Gully Gray

Donna Hartman

Larry & Marilyn Heffelmire

Mike & Loretta Heffelmire

Steve & Virginia Heffelmire

Daniel Honchell

Jamie Howard

Jerry & Stefanie Keller

Doug & Luree Ketcham

Jeanne Lehn

The late Charles Lehner & Diana Lehner Miller

Deb Locke

Gary & Jennifer Lohmiller

The late Frank R. Longcamp

(posthumously)

D. Neal & Monica Meece

Sherry & Rich Midlam

The Town of Moores Hill

Barry & Fayla Nanz

The late R. Daniel Newhouse

Gerald & Dorothy Nixon

Jane & Mike Noel

North Dearborn Conservation Club

Jenni Pause

Courtney PeGan

James Mitchell PeGan

Nicki PeGan

Darlene Phillips

Ron & Bonnie Powell

Amber Probst

F. William and Stephanie Rahe

John & Patricia Rahe

The late Dellas Ross and the late Dorothea Ross

The late Jim Rupel & the late Janet Rupel

The late Ronald Selmeyer

The late Loren Shuter

Jim & Sue Stock

Heather Strasemeier

Sunman Rural Fire Department Members

Dr. Jim Swanson

Jo Ellen Tucker

Nick & Judy Ullrich

The late Louise Walker

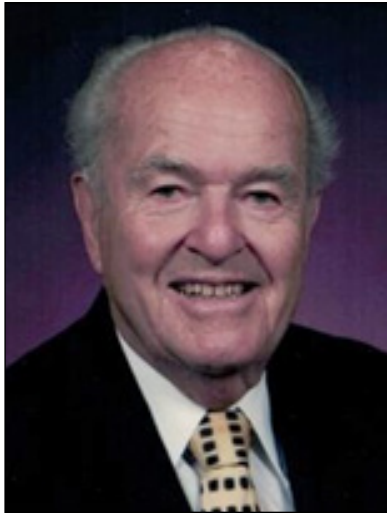
The late William Zimmer & the late

Marjorie Zimmer

REMEMBERING ROBERT S. DUNEVANT

The Dearborn Community Foundation (DCF) lost a fine friend, **Robert S. Dunevant** of West Harrison in 2016. Dunevant passed away in early February at the age of 95. The late Mr. Dunevant and his wife Helen Dunevant were inducted into the DCF Legacy Society in 2002 for their contributions to endowment at DCF. The Legacy Society is made up of a group of individuals who have made a dedicated effort to invest in our community through endowment at the Foundation. The Dunevant's contributed to several existing endowments and made original donations to establish new endowment funds to support charitable causes in the community.

"Bob Dunevant without a doubt cared about his community," said Fred McCarter, DCF Executive Director. "I know his kind heart and sense of humor is deeply missed by many. When he sought to support something, he put his whole heart into it to help make things happen."



Robert S. Dunevant

The Dunevant's financial contribution to the Foundation obviously was greatly appreciated, but they went beyond that kind of support, McCarter said. They once hosted a

Saturday brunch at their home to help with volunteer board and committee recruitment, McCarter said. "Bob was a smart guy, who was always willing to provide input on how we could ensure the Foundation could be on solid ground operationally," he said.

Mr. Dunevant was very active in the Dearborn County community. He was active in the Bright Lions Club and Dearborn Hills United Methodist Church. He also was instrumental in the establishment of the Lawrenceburg Public Library Branch in Logan and in bringing the North Dearborn Village Apartments to the Bright area.

Dunevant was a graduate of Ohio State University and served in the U.S. Army as Airborne Field Artillery Unit Commander during World War II. After service he attended the Wisconsin School of Banking. He had a long career working in the banking industry.

DCF GRANTS SUPPORT MANY CAUSES



DCF grants support many causes in Dearborn County. Far left: The Lawrenceburg Youth Grant Program provides grants to support youth organizations, like the Lawrenceburg Greendale Soccer Club. Above: Grants from the Lawrenceburg Community Grant Program at DCF help charitable organizations provide services to the community, such as the Lawrenceburg Public Library's new mobile library. Left: grants also help to enrich the lives of people of all ages, including members of the Southeast Indiana Youth Orchestra.

COURTEOUS PROFESSIONAL STAFF SERVES COMMUNITY WELL

The DCF Team is made up of staff, legal counsel, and community volunteers and board members that serve on the various Foundation committees.

The DCF Staff is a group of courteous, experienced professionals that are dedicated to making a difference in their community through top-notch service to donors, grantees, and other community members, as well as, by providing professional support to board members.

Executive Director Fred McCarter joined the DCF staff in early 2005, after a combined 19 years in the newspaper journalism and media/marketing professions. McCarter also served on the Foundation's board of directors prior to joining the staff. McCarter's professional experience as well as his experience in community relations and governmental affairs serves him well as the Foundation continues in its constant efforts to grow the impact it has on the community through its philanthropic resources.

Program Director Denise Sedler joined the staff in late 2008. Sedler's significant experience in communications, marketing, administration and finance has proven to be very valuable in providing assistance to the many non-profit organizations



Fred McCarter



Denise Sedler



Tom Snape



Cheryl Wessel



Lisa deHart Lehner

and students in Dearborn County. As program director she manages the grant and scholarship programs. In late 2016, Sedler accepted a position as Assistant Director of Admissions-Adult Strategies at Ivy Tech Community College in Lawrenceburg. In early 2017, **Tom Snape** followed Sedler in the role of DCF program director. Snape brings significant experience to the Foundation as a communications professional, and in sales and customer service which has already proven to be very valuable in providing assistance to the many non-profit organizations and students in Dearborn County. As program director Snape manages the grant and scholarship programs.

Accountant Cheryl Wessel came to the Foundation in late 2007. Wessel brings to the Foundation more than 30 years of experience in the accounting field. Her work experience and volunteer activities provides the Foundation and Community with a very valuable asset for both non-profit accounting and tax.

Legal Counsel Lisa deHart Lehner with Wood & Lamping LLP is one of the founders of DCF. Lehner is a significant asset to the Foundation through her expertise in tax planning, charitable giving, trust administration, probate administration, and estate planning as well as from her extensive knowledge of the Foundation.

COMMUNITY VOLUNTEERS AND BOARD MEMBERS FORM DCF COMMITTEES

In addition to Board Members, community volunteers also participate in the committee process of the Dearborn Community Foundation. Like the board, the participants represent a cross-section of the Dearborn County community.

2016 COMMITTEE MEMBERS

Board Development Committee

Jada Ankenbauer*
David Deddens
Mary Ewbank*
Gerald Nixon*
Jim Stock

Grants Committee

Jada Ankenbauer*
Susan Harrison
Mike Hornbach*
Becky Lyons*
Gerald Nixon*
Dr. Matthew B. Probst
Bill Ward*

Investment Committee

Jim Deaton
David Deddens
Leigh Kem*
Phil Meyer
Barry Nanz
Dr. Matthew B. Probst
John Rumsey

Kevin Schafer*
J David Wismann*

Lilly Scholarship Committee

Karen Blasdel*
Mary Fields
Marsha Ford
Bill Lakes*
Elise Smith*
J David Wismann*

Community Scholarship Committee I

Paula Bruner*
Julie Murphy*
Jon Strautman
Judy Ullrich

Community Scholarship Committee II

Connie Cleary
Loretta Day*
Cherie Maddin*
Randy Tyler*

Community Scholarship Committee III

Michelle Deddens
Fayla Nanz
Mark Neff
Jim Stock

Lawrenceburg Youth Grant Program Committee

Barb Branigan
Dick Castillo

Garrett Cavanaugh
Mike Heffelmire
Brenda Konradi
E.G. McLaughlin
Mike McLaughlin

Women Empowering Women

Jada Ankenbauer*
Sally McLaughlin
Sue Clark
Marie Dausch
Deanna Hacker
Luree Ketcham
Liz Morris
Judy Ullrich

* Denotes 2016 Board of Director's member

BUSINESS ORGANIZATIONS AND INDIVIDUALS ARE "FRIENDS" OF THE FOUNDATION

"FRIENDS OF THE FOUNDATION"

The Dearborn Community Foundation (DCF) tries to recognize individuals, organizations or businesses that have been strong supporters of the Foundation for a significant period of time. These long time supporters of the Foundation come from all corners of Dearborn County and have a history of strong involvement in the community.

1997 Charles W. Lehner

1998 Lisa deHart Lehner

1999 Richard Ullrich, Jr.

2000 Mark Neff, Dellas Ross

2001 John Maxwell

2002 Jim Deaton, E.G. McLaughlin

2003 Dr. Frank Frable, James Rupel

2005 Mike Kramer, Jim Helms

2006 Leaders of City of Aurora, Dearborn County & City of Lawrenceburg

2007 Argosy Casino & Hotel, Pi Chapter of Kappa Kappa Kappa Inc. of Lawrenceburg, Rupel Family & Hidden Valley Golf Club

2009 Aurora Public Library District, Dillsboro Volunteer Fire Department, Main Street Aurora, and South Dearborn Dollars For Scholars

2010 Aurora Casket & the Barrott Family, Historic Hoosier Hills RC&D, Inc., Ivy Tech Foundation, UCB Charitable Foundation, and U.S. Bank

2014 Dave and Michelle Deddens

2015 The late William K. Ewan (posthumously)

LAUREN HILL FUND MAKING A DIFFERENCE

The DCF Board of Directors established the Lauren Hill Make A Difference Fund in late November 2014 to honor Hill, who inspired others during her battle with cancer; and to award grants that make a difference in the community. So far nearly \$10,000 in grants has been awarded from the endowment fund.

Hill, a Greendale resident and Lawrenceburg High School graduate, died at the age of 19 on April 10, 2015, after a battle with terminal brain cancer. She inspired people around the world with her courageous efforts to live her dream of playing college basketball and to raise more than \$1.5 million for The Cure Starts Now Foundation to fund cancer research to find a cure for Diffuse Intrinsic Pontine Glioma (DIPG) and pediatric cancer.

The Lauren Hill Make A Difference Fund is a community endowment fund, which means the current and future DCF Board with help from Foundation staff members can make the decisions to award grants in perpetuity to address changing needs in the community. Just like DCF's 130 other endowment funds, the "Lauren Hill Fund" has an annual distribution of funds that are available for awarding grants to eligible charitable organizations or causes.

"We are trying to make smaller, more proactive grants from the Lauren Hill Make A Difference Fund," said Fred McCarter, DCF Executive Director. "Through these grants, our goal is to try and inspire others to give of themselves to make the world a better place, just as Lauren inspired all of us with her example of philanthropy and her motto to 'Never Give Up!'"

The first Lauren Hill Make A Difference Fund grant was awarded in May 2015 to the Child Life Activity Center at Cincinnati's Children's Hospital Medical Center for the purchase of arts and crafts supplies. Hill spent nine-weeks at Children's Hospital during her battle with cancer and during that time used art as a diversion, a way of expressing herself and to socialize with others. The \$1,000 grant provided the Child Life Activity Center with arts and crafts supplies to be used by youngsters of all ages as one of many diversional activities while they undergo treatment.

In 2016, DCF awarded another grant from the Lauren Hill Make A Difference Fund to help Tri-State musical therapy organization, Melodic Connections, recover from devastating damage to its studio/office and its contents caused by flash flooding. A \$2,000 grant was awarded to help the organization purchase office supplies and equipment damaged or lost during the flash flooding.

"Melodic Connections is a fine organization that touches the hearts of hundreds of clients and their families throughout the Tri-State with musical therapy," McCarter said. "Our hope is this grant will help the organization continue to enrich the lives of people of all ages through music."



A Lauren Hill Make a Difference Grant provided funds to Melodic Connections (above) to help with its new studio after the old one was damaged by flooding. Another Lauren Hill Grant recently provided funding to Beecher Presbyterian Church, Lawrenceburg, to support its role in the Southeast Community Gardens coalition.

Two Lauren Hill Make A Difference Fund grants have been awarded so far in 2017: a \$3,000 grant to provide a free day-long workshop for non-profit organizations' board and staff members from across Dearborn County; and a \$3,800 grant to Beecher Presbyterian Church, Lawrenceburg, for its efforts with the Southeast Indiana Community Gardens Coalition.

The workshop entitled "Building A Strong Board and the Board's Role in Fundraising" provided a great opportunity for volunteer Board members and staff members of non-profit organizations to learn about governance and fundraising, McCarter said. "Not all organizations can afford to send their board members and/or staffs to this type of workshop, so we are very glad to work with the Dearborn Adult Center, the United Way and the Indiana Nonprofit Resource Network to provide this important educational opportunity at a low cost to charitable organizations in our community," he said.

The workshop was well attended by organizations that work hard every day to positively impact the lives of Dearborn County residents. Participants learned basic board roles and responsibilities, appropriate board size and struc-

ture, proper ways to recruit, orient and evaluate all board members.

The \$3,800 grant to Beecher Presbyterian Church helped the efforts of the Southeast Indiana Community Gardens Coalition at its garden in Lawrenceburg. The funds will help purchase a moveable storage shed, garden tools, lumber for construction of raised garden beds, and informative signage.

Southeast Community Gardens is made up of volunteers from a diverse group of community partners, representing higher education (Ivy Tech Community College), local K-12 schools, food pantries, other community charitable organizations, including churches, and local businesses. The coalition is working hard toward its mission to provide an inclusive environment for all members of the community to work together toward improving food and social insecurities, physical and emotional wellness, and nutritional and ecological awareness.

"This great coalition of community-minded individuals that see benefits of community gardening as endless and they are working together to have a great impact on the Dearborn County community," McCarter said.

FINANCES

STATEMENTS OF FINANCIAL POSITION

December 31, 2016 and 2015

ASSETS		2016	2015
Cash and cash equivalents	\$	2,419,219	\$ 2,089,467
Certificates of deposit		569,993	564,306
Investments		15,243,364	14,932,474
Property and equipment, net		23,649	38,701
	\$	\$18,256,225	\$ 17,624,948
LIABILITIES AND NET ASSETS			
Liabilities			
Accounts payable and accrued expenses	\$	8,076	\$ 8,270
Charitable gift annuities payable		5,192	5,744
Liability for funds held as agency endowments		5,821,789	5,759,968
Custodial funds		1,781,954	1,607,600
Total liabilities		7,617,011	7,381,582
Net assets			
Unrestricted net assets:			
Operating		1,045,401	981,523
Board designated		95,552	92,699
Temporarily restricted net assets		9,498,261	9,169,144
Total net assets		10,639,214	10,243,366
	\$	\$18,256,225	\$ 17,624,948

STATEMENTS OF ACTIVITIES

For the Years Ended December 31, 2016 and 2015

Support and revenues	2016	2015
Contributions	\$ 175,121	\$ 1,560,578
Investment return, net	451,352	(410,386)
Other investment income	20,365	21,933
Administrative fees	348,581	334,530
Other revenue	22,320	20,481
Total support and revenues	1,017,739	1,527,136
Total expenses	621,891	590,632
Change in net assets	395,848	936,504
Net assets, beginning of year	10,243,366	9,306,862
Net assets, end of year	\$ 10,639,214	\$ 10,243,366

An independent audit for the years ended December 31, 2016 and 2015 was conducted by Blue & Co., LLC for the Dearborn Community Foundation, Inc. The complete audited financial statements can be reviewed at the Foundation office located at 322 Walnut Street, Lawrenceburg, IN 47025. The Dearborn Community Foundation, Inc.'s 2016, 2015 and 2014 Form 990 may also be reviewed at the Foundation office.



HOW YOU CAN GET INVOLVED

There are many ways to get involved in the Dearborn Community Foundation's efforts to make a difference in Dearborn County.

■ **Become Aware:** Learn more about how the Foundation helps donors achieve their charitable goals and the positive impact of the results.

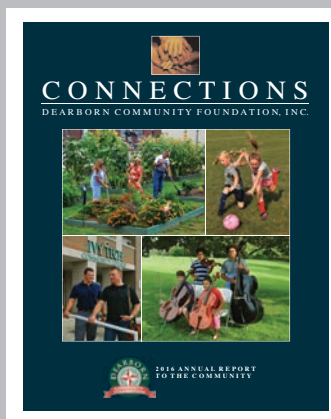
■ **Volunteer:** Offer to be a volunteer board or committee member. Volunteers also are needed at Foundation events.

■ **Be A Donor:** Establish an endowment to support your favorite charitable organization or cause in perpetuity. ... Or contribute to an existing fund at DCF. We can help you make a difference for the charities or the issues you care most about.

■ **Share Ideas:** Let the DCF staff and board members know about your ideas. Let us know what you think the charitable needs are in our community.

■ **Be A Sponsor:** Individuals, organizations and businesses can provide sponsorship support or door-prize items for DCF's annual golf scramble to raise funds to support Foundation operations.

MISSION STATEMENT: The Dearborn Community Foundation, Inc. is a catalyst to connect people who care with causes that improve the quality of life in our community by advancing cultural, educational and social opportunities, while preserving our community's heritage and helping donors to create a permanent legacy in Dearborn County.



ON THE COVER: These photos truly show "Connections" between those who establish grants, endowments and scholarships and the impact their efforts have on the Dearborn County community.

DEARBORN COMMUNITY FOUNDATION
322 Walnut Street ■ Lawrenceburg, IN 47025
812 - 539 - 4115 ■ Fax 812 - 539 - 4119
www.dearbornconf.org